

November **2023**



**NEW ZEALAND  
SEED POTATO CERTIFICATION AUTHORITY**

# **Seed Scheme Rulebook**

**A Potatoes New Zealand Publication  
"94 Years of Certified Seed"**

# Contents

<b>Amendment record.....</b>	<b>4</b>
<b>Definitions &amp; Acronyms .....</b>	<b>8</b>
<b>1. Introduction .....</b>	<b>10</b>
1.1 Purpose .....	10
1.2 Role of the Seed Potato Certification Authority.....	10
1.3 Overview of the seed potato certification scheme .....	10
1.3.1 Pyramid programme .....	13
1.3.2 Field Certified .....	14
1.3.3 Group programme.....	14
1.3.4 Approved Organisations .....	14
<b>2. Requirements for growers .....</b>	<b>14</b>
2.1 Registration of new growers.....	14
2.2 Annual crop registration .....	14
2.3 Potato Cyst Nematode programme registration .....	15
2.4 Annual crop registration fees.....	15
2.5 Withdrawal of crops from the scheme.....	15
2.6 Crop management .....	16
2.6.1 Identification of seedlines.....	16
2.6.2 Crop protection.....	16
2.6.3 Rogueing.....	16
2.6.4 Tolerances for defects in seed crops.....	16
2.7 Field inspection .....	17
2.7.1 Number of field inspections required .....	17
2.7.2 Field Inspection Standards.....	18
2.7.3 Suspension of Inspection.....	18
2.7.4 Downgrading following field inspection.....	18
2.7.5 Rejection following field inspection.....	19
2.7.6 Rejection of a part crop .....	19
2.8 Appeals .....	19
2.9 Harvesting and grading .....	20
2.9.1 Traceability.....	20
2.9.2 Tolerances for faults at tuber inspection .....	20
2.9.3 Official tuber inspection.....	21
2.10 Storage.....	22

<b>3. Certification of seed lots</b>	22
<b>4. Requirements for merchants</b>	22
4.1 Registration of merchants	22
4.2 Registration of new varieties	22
4.3 Upgrading seedlines	23
4.4 Downgrading seedlines	23
4.5 G2 virus testing	23
4.6 Labels	24
<b>5. Requirements for inspectors</b>	24
5.1. Technical requirements	25
5.2. Documented procedures	25
5.3. Staff competency	25
5.4. Verification activities	25
<b>6. Requirements for approved organisations</b>	25
<b>7. Requirements for reviewers</b>	26
<b>8. Requirements for tissue culture laboratories and mini-tuber production facilities</b>	26
<b>9. Contacts</b>	27
<b>Appendix 1.</b>	
Seed Certification Labels	29
<b>Appendix 2.</b>	
Minimum conditions to be satisfied by approved laboratories for the production of tissue culture for certified seed potatoes	32
<b>Appendix 3.</b>	
Requirements for approved facilities for the production of mini-tubers for certified seed production	34
<b>Appendix 4.</b>	
Seed Certification Forms	36

## Amendment record

Date	Section	Nature of amendment
16 September 2014	Whole of document	Revision, reorganisation and reissue of the entire document and changes to remove ambiguity. It is recommended that industry participants review the entire document.
	Definitions	Definitions of terms used in the scheme.
	1.3.1	Clarification that G0 material is the first ground planted mini-tuber or tissue culture plantlet.
	2.3	New requirements for registration of G0 material.
	2.7.1	New requirements for segregation of seedlines (points 4 & 5).
	2.7.4	Revisions to field inspection tolerances:
		Chemical damage and weeds.
		Revised tolerance table and deletion of previous "combined virus and rogues" table.
		New requirement that seedlines certified in the group programme meet G6 field tolerances.
	2.10.2	Provision for inspectors to apply additional charges if they have to return to complete an inspection due to grower tuber inspection records not being available.
	2.10.3	Introduction of 1% tolerance for powdery scab and clarification of sampling procedure.
	4.3	New requirements for registration of G0 material.
	4.4	Determination that upgrading applications are to be approved by the Authority.
	4.5	New section allowing downgrading of seedlines for commercial reasons.
	4.6	New requirements for G2 virus testing.
	5	Clarification of requirements for inspectors.
	8	New requirements for tissue culture laboratories and mini-tuber production facilities to be registered and to issue statements of origin for material entering the scheme.
	Appendices	Annexures relating to approved organisations removed and now available from the Secretary.
	Appendix 2 and appendix 3	New requirements for tissue culture laboratories and mini-tuber production facilities to issue statements of origin for material entering the scheme.
23 September 2015	2.2	Growers may change inspection body only if done before the first inspection.
	2.4	Renaming of the PCN Compliance Programme.
	2.7.3	Rogueing to include plants showing Liberibacter symptoms.
	2.7.4	Inspectors to record on the inspection form the incidence of suspected Liberibacter in certified seed crops and report this to the Authority.
	2.9	Changes to appeals process.
	4.4	Change to the process for Merchants to notify the Authority of upgraded seedlines.
	5.1	Renaming of the MPI Pest Survey Standard.
	5.3	Staff competency – changed training requirements for inspectors.

Date	Section	Nature of amendment
	6	Changed reference to MPI Technical Standard: Audit and risk categories for establishing audit frequency.
	7	Changed reference in MPI Standard IVA Requirements to option 1.
	9	Updated contact details.
12 October 2015	9	Updated contact details.
16 August 2016	2.3	Replaced "registered" with "Authority approved" tissue culture laboratory or mini-tuber production facility.
	2.7.4	New tolerance for Candidatus Liberibacter solanacearum symptoms established.
	2.8.3	Correction to cross-referenced sections.
	2.8.4	New section allowing rejection of a part crop at field inspection.
	4.6	Addition of the word "crop" to point 1.
26 October 2017	All	Annual update for minor corrections.
	Definitions	Addition of new definitions and acronyms.
	1.3.1	Clarifications of the operation of the pyramid programme.
	2.2	Removal of point 5. Tags no longer need to be submitted with entries.
	2.7.4	Pyramid programme tolerances. Clarification that tolerances are based on visual examination for symptoms.
	2.8.2	New section 2.8.2 allowing suspension of inspection, corrective actions, and re-inspection. Renumbering of following sections.
	2.9	Modifications to the appeal process. An Appeals Panel established. Appeal fee in non-refundable.
	2.10.2	Deletion of requirement for growers to operate a documented tuber inspection procedure and provide grading sheet to the Inspector. Renumbering of subsequent sections.
	2.10.3	Renumbered to 2.10.4. Other Faults – Clarification that the tolerance is applied to the whole inspection sample. Table 3, rewording of heading.
7 August 2018	1.3.1	Deletion of "and other tests" and insertion of "except for "Field Certified" lines"
	1.3.2	Insertion of a new 1.3.2 for "Field Certified" lines, and consequent renumbering of following sections.
	2.3	Cross reference inserted for new varieties being registered, and statement that G3-G6 lines will be published on the PNZ website and Seedlines booklet.
	2.10.2	Clarification that tuber inspection is not done for Field Certified seedlines.
	2.10.3	Clarification that tuber inspection is not done for Field Certified seedlines.
	4.1	Clarification that all Merchants must be registered in the Scheme (refer to Merchant in the Definitions).
	4.2	New information requirements to accompany entry of new varieties, and rules for variety registration.
	4.2	Removal for requirement that new varieties are subject to Powdery scab indexing.
	4.5	Addition of rule for downgrading seedlines from Pyramid to Field Certified.
	4.6	Clarification that G2 virus testing is done on G2 harvested lines.
	Appendix 2.	Update of the names of pathogens to be tested for.

Date	Section	Nature of amendment
30 July 2020	Seedlines	Addition of Seedline Summary Table - Harvest 2020.
	1.3	Deletion of grower tuber sampling and inspection procedure. Deletion of Verify grower tuber inspection from Figure 1. Addition of flow chart of the Seed Certification Scheme.
	2.1	Update the name of the Registration of New Growers Form.
	2.2	Addition of point 5 to be eligible for registration.
	2.4	Update on PCN Programme Registration.
	2.7.1	Addition of the sentence "with the planted and harvested generation on the label or at least the harvested generation" to point 3.
	2.7.3	Rule wording changes under Rogueing.
	2.8.1	Reword on when Field Inspections should be done and addition of Field Inspection Form.
	2.8.2	New section 2.8.2 Field Inspection Standards. Renumbering of following sections.
	2.10.2	Rule wording changes for Scab and Sizing.
	2.10.3	Addition of Tuber Inspection Form.
	4.1	Update the name of the Registration of New Merchants Form.
	4.2	Addition of New Varieties Form and deletion of fee to assist with crop identification.
	4.6	Deletion of "are required to" and insertion of "or growers must". Addition of sampling small plots protocol.
	5.3	Update the year on how often the inspectors must attend a course.
	5.4	Deletion of point 5 "Grower tuber inspection has been conducted and record sheets completed".
	9	Updated contact details.
	Appendix 2.	Addition of PMTV and TRV on the names of pathogens to be tested for and deletion of "haplotypes A & B" to point 2. Update the year for testing tissue culture collections and addition of PMTV and TRV on the names of pathogens to be tested for and deletion of "haplotypes A & B" to point 3.
	Appendix 4.	Addition of all Seed Certification Forms.
3 September 2021	Definitions	Addition of Generation, Mini-tuber, Plot, PVR and Tissue Culture definitions.
	1.2	Update on the composition of the members of the Authority.
	1.3	Update on who is authorized to undertake field & tuber inspections. Addition of three G0 Producer Labs on the flow chart.
	1.3.1	Deletion on the second paragraph of the last sentence: "New varieties must undergo validation before being accepted into the pyramid programme". Addition on the third paragraph of "the seed merchant or" for the payment of G2 leaf testing for viruses.
	1.3.3	Update on Group Programme.
	2.2	Change of wording on point 3 & 4 from "farm number" to "region of production"
	2.3	Deletion of "Registration of G0 Material into the pyramid programme". Renumbering of following sections.
	2.4	Deletion of word "two" from the cost of field inspections covered on the fee.
	2.5	Addition of "notify the Scheme Administration". Deletion of "All claims for refunds must be lodged with the Secretary within 30 days of the crop withdrawal date".

Date	Section	Nature of amendment
	2.6.1	Deletion on point 2 of "be visible from the centre".
	2.7.1	Addition of "or crops with a duration greater than 110 days from planting". Addition of third field inspection policy. Deletion of "the inspection fee paid to the Authority covers two inspections only. Where a third inspection is required or re-inspections are carried out, additional charges will apply".
	2.7.2	Update on Field Inspection Standards and plant count.
	2.7.4	Addition of Compulsory and Voluntary Downgrading.
	2.8	Updates on Appeal process.
	2.9.1	Change of wording from "seedline to crop".
	2.9.3	Update on Official Tuber Inspection.
	4.2	Deletion of point 2 from registration of new varieties.
	4.3	Deletion of "G0 material entering the pyramid programme" from requirements for merchants. Renumbering of following sections.
	5	Update on requirements for inspectors.
	8	Reword on requirements for tissue culture laboratories and mini-tuber production facilities.
	9	Updated contact details.
	Appendix 2.	Update of point 8. Addition of point 10.
	Appendix 3.	Update on traceability. Addition of audit time.
	Appendix 4.	Update on the following forms: "Application for seed potato certification", "Certificate of origin - G0 material", "Tuber Inspection", "Variety Registration" and "PCN Programme Registration Form".
5 October 2022	1.3	Addition of one G0 Producer Labs on the flow chart.
	1.3.4	Reword from audit to review.
	2.2	Change of wording on point 4 from "the Administrator" to "AsureQuality".
	2.9.2	Update of Table 2 and addition of Table 3.
	4.5	Addition of 3 different options for G2 virus testing.
	5	Reword from audited to reviewed.
	5.2	Reword from auditor to reviewer.
	6	Reword from auditors to reviewers, audits to reviews and addition of reviews frequency.
	7	Update on requirements for reviewers.
	Appendix 3.	Remove from the requirements for registered facilities for the production of mini-tubers for certified seed production the pre-harvest testing.
	Appendix 4.	Update on the Tuber Inspection form.
25 October 2023	2.2	Reword from AsureQuality to Administrator.
	4.5	Addition of G2 label endorsed with "Virus test not completed".
	5.3	Reword on Staff Competency.

## Definitions & Acronyms

Approved	Authorised by the New Zealand Seed Potato Certification Authority to perform specified activities under the scheme.
Approved organisation	An organisation authorized by the Authority to undertake seed potato certification activities under the Scheme.
Authority	The New Zealand Seed Potato Certification Authority, operating as an unincorporated committee of Potatoes New Zealand Incorporated.
Certified seed	Seed potatoes for which seed certification labels have been issued.
Faults	Factors affecting seed potato quality, including pests and diseases and their symptoms, rogues, external damage, misshapen tubers, and sizing, for which tolerances are established within the Scheme.
Field inspection	Official visual examination of potato crop entered for certification to determine compliance with requirements of the Scheme.
Generation	It's one growing cycle of a potato crop.
Lot	A seedline, or portion of a seedline, presented for official tuber inspection.
Merchant	Commercial entity managing the multiplication of seed potatoes for seed potato certification.
MAO	MPI Approved Organisation.
Mini-tuber	Seed potato grown in a control environment facility e.g., glass house.
MPI	Ministry for Primary Industries.
Official	Established, authorized or performed by the Authority.
PCN	Potato Cyst Nematode.
Plot	It's the area of land used to plant a specific seedline (one).
PVR	Plant Variety Right.
ROP	Region of Production.
Tissue culture	Growth of potato plantlet on an artificial medium under sterile conditions.
Tuber inspection	Visual examination of seed tubers submitted for certification to determine compliance with requirements of the Scheme.
Rogues	Off types (genetic variants), volunteers, and foreign varieties.
Scheme	The New Zealand Seed Potato Certification Scheme as published and amended from time to time by the Authority.
Seed certification labels	Labels approved by the Authority used to provide assurances to seed potato buyers that seed meets the requirements of the Scheme.
Seed Potato Certification	All those activities leading to, and including, the official issuance of a seed certification label.
Seedline	Seed potatoes, including tissue culture plantlets, of a single variety that when grown are confined within one field and for which a unique reference number has been issued by the Authority.





# **Potatoes New Zealand**

*Building a secure and sustainable  
future for our industry*



[www.potatoesnz.co.nz](http://www.potatoesnz.co.nz)

# 1. INTRODUCTION

## 1.1. PURPOSE

The purpose of the New Zealand Seed Potato Certification Scheme (the Scheme) is to provide assurance that certified seedlines meet the minimum standards for disease freedom and trueness to type that are specified by the Authority. The scheme is also intended to at least meet the requirements of UNECE Standard S1 concerning the marketing and commercial quality control of seed potatoes.

## 1.2. ROLE OF THE SEED POTATO CERTIFICATION AUTHORITY

The New Zealand Seed Potato Certification Authority (the Authority) is a sub-committee of Potatoes New Zealand Incorporated and members of the Authority are appointed by the Sub-committee and signed off by Potatoes New Zealand Board. Membership comprises of 2 seed growers, 2 merchant members, 2 end users, 2 process industry representatives, plus one Potatoes New Zealand Board liaison.

The Authority is responsible for all aspects of the operation of the Scheme, including determining the tolerances for diseases and other defects, and appointing and contracting organisations to manage the Scheme or to conduct inspections. The operation of the scheme is managed by the Administrator and the Secretary, and Technical Panels are established by the Authority from time to time to consider and provide advice on specific technical issues.

The Administrator manages the day to day operation of the Scheme. This includes registering growers, merchants and crops into the scheme, managing the database of seedlines, recording virus test results, recording inspection outcomes, handling appeals, and reporting to the Authority.

The Secretary manages the operation of the Authority and is the contact point for the Authority. The role includes preparing agendas and papers for Authority and Technical Panel meetings, maintenance of the Scheme document, providing technical support for the Authority, managing the Authority's work programme, managing finances and preparing accounts for Authority meetings, and for communications with members.

## 1.3. OVERVIEW OF THE SEED POTATO CERTIFICATION SCHEME

The Authority operates a single Seed Potato Certification Scheme. Within that Scheme there are two multiplication programmes: a pyramid multiplication programme and a group programme. The Authority authorizes Potatoes New Zealand (PNZ) to undertake field and tuber inspections internally. When PNZ is not able to deliver these services, the Authority will contract organisations to undertake the inspections. In addition, the Authority provides an option whereby organisations (e.g., seed merchants) may be approved to undertake certification activities on behalf of the Authority. These options have been provided in order to maximise industry participation in the Scheme.

Seed potatoes certified under the scheme meet the requirements and tolerances of the scheme at the time that field and tuber inspections are carried out. Grower requirements are verified through the growing cycle (identification of sown crops, separation of varieties, traceability) and at tuber inspection. Field inspections are undertaken to ensure tolerances for virus, diseases, and varietal purity are not exceeded.

Freedom from potato cyst nematode is verified by requiring that all seed crops are registered in the Ministry for Primary Industries' "Export Compliance Programme for the Provision for Potato Cyst

Nematode (PCN) and Potato Wart Additional Declarations". This is an efficient way of providing assurances of PCN freedom without the Authority having to undertake PCN testing within the Scheme.

Subsequent storage, cutting and transport may affect the quality of seed planted by a table or process grower later in the season. Certification by the Authority does not provide any assurances about these activities and buyers are encouraged to work closely with seed growers and merchants to make known their commercial requirements and to confirm arrangements for storage, cutting and transport. The boundaries of responsibilities are illustrated in Figure 1, and the flowchart of the Seed Certification Scheme is illustrated in Figure 2.

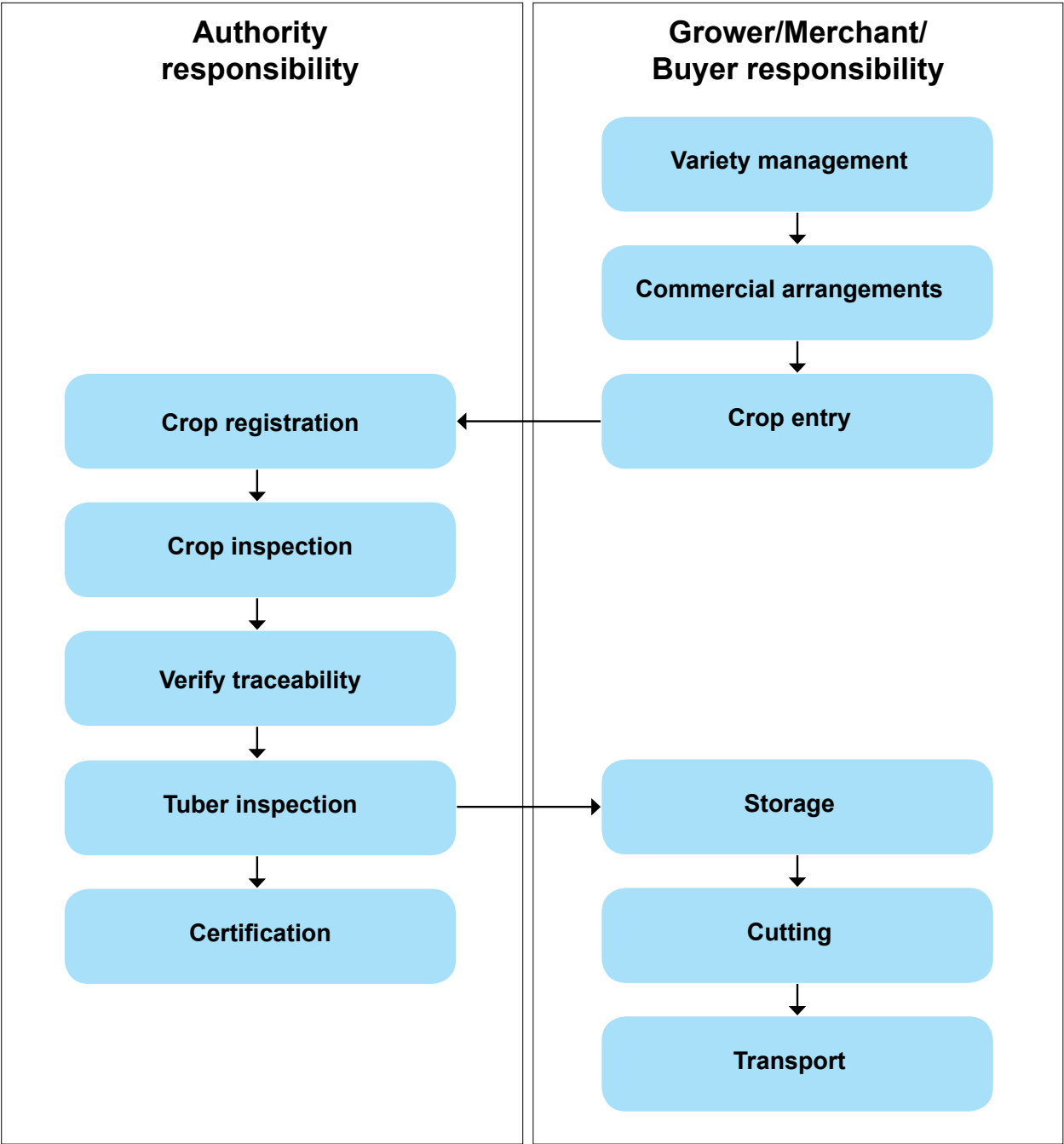
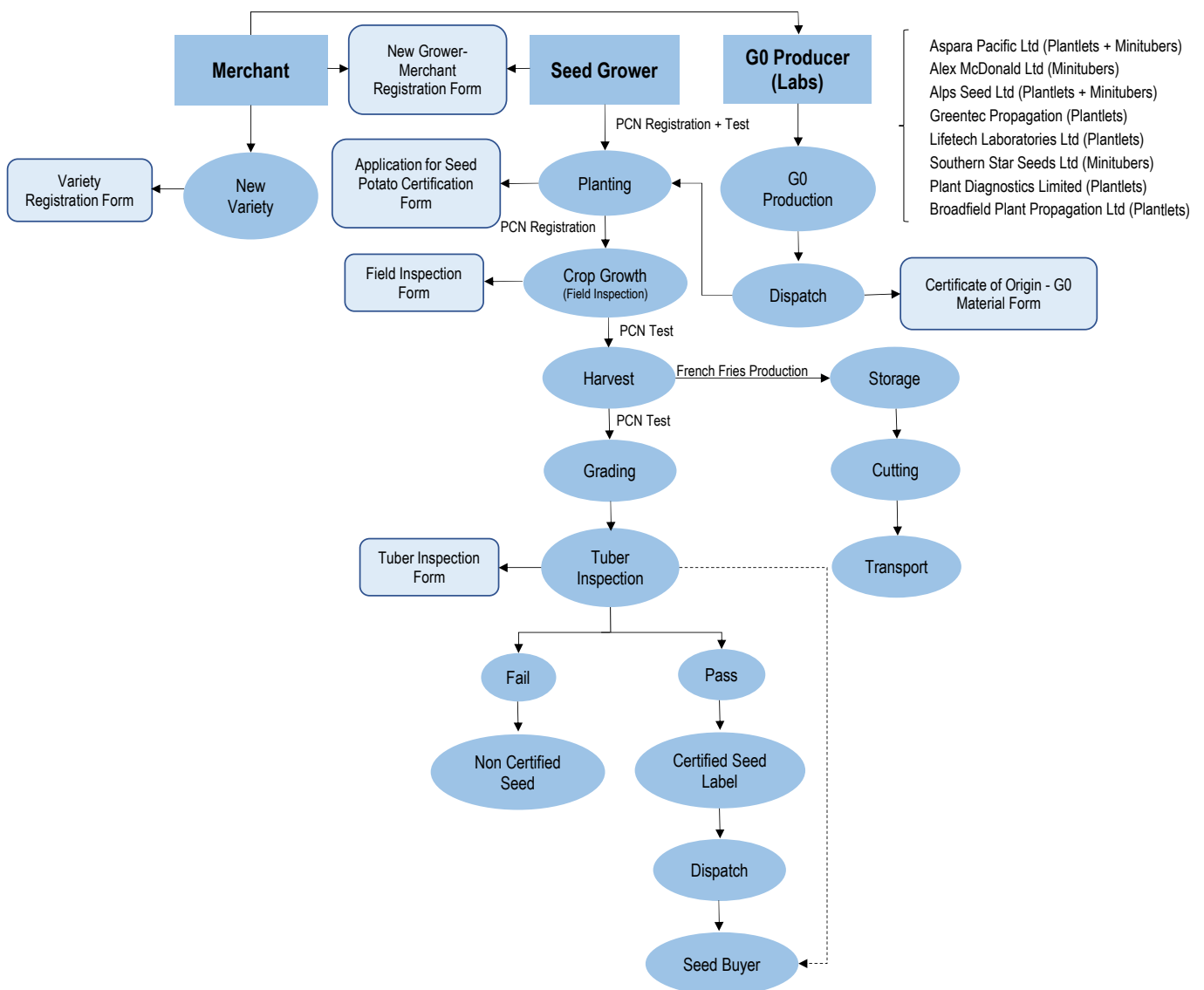


Figure 1. Delineation of responsibilities between the Authority and commercial interests in the production of Certified Seed Potatoes.

12 | NZ Seed Potato Certification Scheme



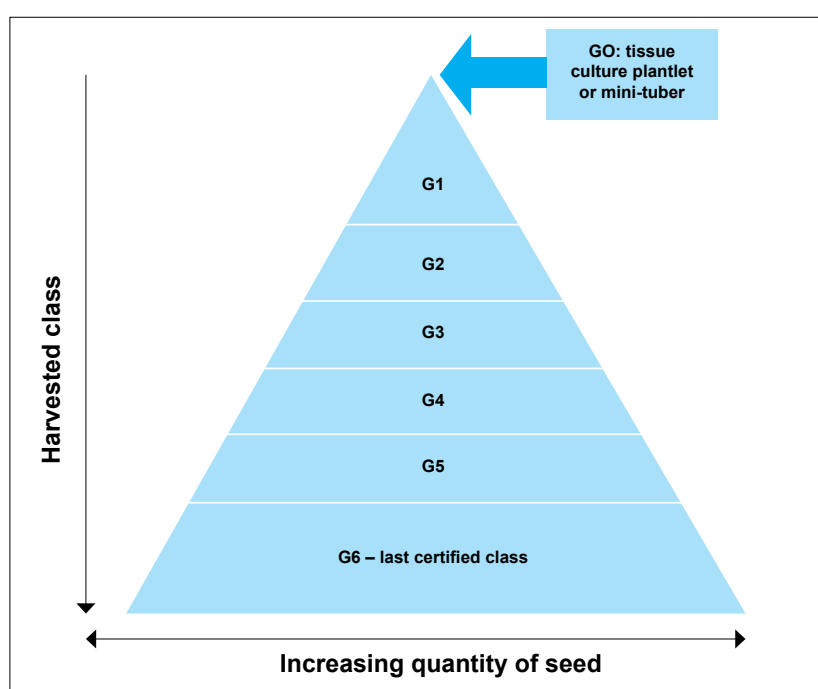
### 1.3.1. PYRAMID PROGRAMME

The Pyramid Programme is a seed potato multiplication programme starting with tissue culture plantlets or mini-tubers and tuber numbers are increased through successive field generations (denoted by the "G" number in the programme). Virus tested tissue culture or mini-tubers produced in approved tissue culture laboratories or mini-tuber production facilities is considered to be G0, and this disease free material provides new starting stock. As soon as G0 material is planted in the ground it becomes G1 harvested seed. Each year seed passes to a following lower class distinguished by a higher G number. On reaching the lowest certifiable class (G6) seed is no longer eligible for seed multiplication and cannot be certified beyond this point. Certified classes are G1, G2, G3, G4, G5 and G6 (refer Figure 3).

The Authority has specific requirements for the entry of new material and new varieties into the pyramid programme, as described in detail in the Merchant section of this document. Tissue culture plantlets or mini-tubers entering the pyramid programme must be sourced from tissue culture laboratories or mini-tuber production facilities approved by, and meeting the requirements of, the Authority.

All G2 lines (i.e., G1 seed that is planted and is registered as G2 for field and tuber inspection) are required to undergo leaf testing for viruses at the cost of the seed merchant or the party submitting samples for testing. Every generation is subject to at least two field inspections where viruses, diseases, varietal purity and other defects are assessed against the tolerances established for the programme. Tuber inspections are also undertaken at any point where the ownership of the seedline changes (e.g., when seed is sold to another seed grower or when seed is sold for table or process production) to ensure that defect tolerances are not exceeded, except for "Field Certified" lines.

Following tuber inspection, labels are issued for the appropriate class (G1-G6) of seed to certify that scheme requirements have been met.



**Figure 3. The pyramid multiplication programme.** New material is considered G0 until it is ground planted and registered as a G1 crop and progresses through subsequent generations to G6 harvested which is the last certified generation. The G number denotes the harvested class of the seed.

### **1.3.2. FIELD CERTIFIED**

"Field Certified" is a programme within the scheme for seed potatoes intended for process potato production. Field Certified is identical to the Pyramid Programme, except that no tuber inspection is undertaken. The status of Field Certified assists with traceability of seed, and makes clear the inspection status of the lines. Seed labels must be endorsed with the words "Field Certified".

### **1.3.3. GROUP PROGRAMME**

In the group programme growers maintain seedlines on their farms and make selections from these for multiplication. Seed must enter from approved tissue culture laboratories or mini-tuber production facilities. Leaf testing is not carried out on group lines, however they are subject to at least two field inspections and tuber inspection at any point where the ownership of the seedline changes (e.g., when seed is sold to another seed grower or seed when is sold for table or process production) to ensure that defect tolerances are not exceeded. Following tuber inspection labels are issued to confirm that group programme requirements have been met.

### **1.3.4. APPROVED ORGANISATIONS**

The Authority operates a process for approval of organisations to undertake field and tuber inspection of their contracted growers' crops as part of documented and reviewed quality assurance systems. Approved Organisations must maintain a documented system containing procedures for meeting the requirements of the Scheme, including procedures for staff competency. Organisations must apply to the Authority for approval, a process which includes independent evaluation of the organisation's documented system and a series of reviews. Ongoing annual reviews are required. An annual approved organisation fee applies, as modified by the Authority from time to time. Full details are available from the Secretary.

## **2. REQUIREMENTS FOR GROWERS**

### **2.1. REGISTRATION OF NEW GROWERS**

All new growers must complete the 'New Grower – Merchant Registration Form' (refer Appendix 4) before applications to register seedlines will be processed. Registration forms are available from the Administrator or from the Potatoes New Zealand website. Submit completed application forms to the Administrator.

### **2.2. ANNUAL CROP REGISTRATION**

Each seedline must be registered annually. Complete the current 'Application for seed potato certification' form (refer Appendix 4). The current version of the application form is available from the Administrator, from the Potatoes New Zealand website, or from an Approved Organisation. To be eligible for registration:

1. Each seedline must be confined within one field.
2. A minimum of 5 harvest seasons is required since the last potato crop was grown in the field.
3. Region of production (ROP) and field letters are required on entry applications for paddock identification.
4. A property map must be supplied. When a ROP has not previously been issued the Administrator will issue a unique region of production and paddock identification letters for the property.



5. A plot map must be supplied with all the lines marked clearly including variety name, harvested generation and seed sown reference number.

Submit completed applications to the Administrator or Approved Organisation. The closing date for entries is 21 days after planting. Where planting is spread over an extended period, growers must ensure applications for early plantings are completed on time. The Administrator may exercise discretion in accepting late entries where this does not impinge on the management of the Scheme or on field inspections.

When all the data from the crop registrations has been checked and verified, a unique and sequential **Crop Reference Number** is allocated, starting with the letter P of potatoes following by the year and then a sequential number (e.g.P20210001) to each seedline entered. This number will be the ID for a particular seedline from planting until it is replanted in the following season.

Next season that Crop Reference Number will represent the ID for the seedline used to plant a current season crop and it will be called **Seed Sown Reference Number**.

Seedlines from G3-G6 harvested will be listed on the Potatoes New Zealand website and other publications.

### **2.3. POTATO CYST NEMATODE PROGRAMME REGISTRATION**

All registered seed potato crops must be entered into, and be compliant with, the Ministry for Primary Industries' (MPI) 'MPI Phytosanitary Official Assurance Programme for Potato Cyst Nematode and Potato Wart'. Growers must register their crops into the MPI programme through Potatoes New Zealand and PNZ will forward to their Independent Verification Agency.

### **2.4 ANNUAL CROP REGISTRATION FEES**

The Authority reviews its fees annually and publishes the fees in the Authority newsletter. The fee comprises of an administration fee and an inspection fee. The administration fee covers management of the seed potato database, management of the Scheme by the Authority, printing of labels, communications, and other administrative matters. The inspection fee covers the cost of field inspections, tuber inspection, providing labels, and reporting to the Authority.

Where growers are operating with an Approved Organisation the Authority will recover the grower's administration fee from the Approved Organisation. The Approved Organisation will make arrangements for field and tuber inspections to be carried out and report the results to the Administrator. The Approved Organisation may charge the grower for these inspections and the administration fee, as determined by commercial arrangements between the parties.

All other seed growers will be invoiced by the Authority for the combined administration and inspection fees. Half of the total will be invoiced in February and the balance in May.

### **2.5. WITHDRAWAL OF CROPS FROM THE SCHEME**

Growers may voluntarily withdraw crops from the Scheme at any time. Once withdrawn the seedlines will not be eligible for re-entry into the scheme. Where a crop is withdrawn prior to the first inspection the grower is required to pay to the Authority only the administration charge per hectare set for that growing season and notify the Scheme Administrator. Where crops are withdrawn after the first inspection no refund will be given.

## **2.6. CROP MANAGEMENT**

### **2.6.1. Identification of seedlines**

At planting and during growth:

1. Individual varieties in the field must be kept separate by at least the equivalent of one clear row between different varieties.
2. At least 5 metres of clear row must be left at each end of the first row of each seedline of the same variety and be clearly marked (clearly marked means marked with a flag, visible post or marker at each end of the row).
3. Each seedline must be readily identifiable in the field throughout the growing season with the planted and harvested generation on the label or at least the harvested generation.
4. No table or uncertified seed crop may be planted on the same property as seed potatoes to be certified under the Scheme, unless the table or uncertified seed crop are sown with certified seed.
5. If the table or uncertified seed crops are sown with certified seed, there must be a 2 meter gap between the table and any certified seed crops sown in the same paddock.

### **2.6.2. Crop protection**

It is recommended that growers implement a robust pest and disease management programme to minimise the risk of infection and spread of infection. A crop diary must be kept for each seedline. Minimum information recorded shall be: planting dates, spray applications, names of spray, rates of applications, burn off date, post-burn off applications, and harvest dates.

### **2.6.3. Rogueing**

Regular observation of the crop is recommended. Rogueing of diseased plants and all tubers associated with these plants (including *Liberibacter* symptoms), foreign varieties and off types should be completed as early as practicable, but must be done before the first inspection. All plant tops and tubers of rogued plants must be removed from the field.

### **2.6.4. TOLERANCES FOR DEFECTS IN SEED CROPS**

Following crop inspections the inspector will determine whether the level of faults in the seedline falls below the established tolerances for pests, diseases, and varietal purity within the group programme or the appropriate generation within the pyramid programme. The relevant tolerances are as follows:

#### ***CHEMICAL DAMAGE & WEEDS***

Any crop showing the effects of chemical damage (e.g., hormonal damage) may be rejected if the number of affected plants is very obvious and extensive and the affected area cannot be isolated for re-inspection. Crops that are excessively weedy may be rejected if the inspector is unable to see the crop and move freely through it. Inspectors will consider the impact of weeds on their ability to inspect the crop and whether chemical damage may impact on daughter tubers, or mask disease symptoms.



## PYRAMID PROGRAMME TOLERANCES

Within the pyramid programme the following tolerances apply to the harvested class of each seedline (Table 1) based on visual examination for symptoms. A seedline that is assessed to be below or at the tolerance indicated will be passed, seedlines that exceed the tolerances will be rejected.

**Table 1. Tolerances for faults by visual examination within the pyramid programme of the Seed Potato Certification Scheme.**

	G1	G2	G3	G4	G5	G6
Maximum Virus Potato virus A, M, X, Y, & leafroll virus	0	0.05 (1 in 2000)	0.05 (1 in 2000)	0.05 (1 in 2000)	0.1 (1 in 1000)	0.2 (1 in 500)
<i>Candidatus Liberibacter</i> <i>solanacearum</i> symptoms	0	0.2 (1 in 500)	0.2 (1 in 500)	0.2 (1 in 500)	0.2 (1 in 500)	0.2 (1 in 500)
Maximum Rogues (off types, volunteers and foreign varieties)	0	0	0.01 (1 in 10,000)	0.01 (1 in 10,000)	0.01 (1 in 10,000)	0.025 (1 in 4000)
Maximum Blackleg ( <i>E. carotovora</i> )	0	0.1 (1 in 1000)	0.1 (1 in 1000)	0.1 (1 in 1000)	0.1 (1 in 1000)	0.3 (1 in 333)
Maximum wilt <i>Verticillium</i> , <i>Fusarium</i> , Pink Rot.	0	0.1 (1 in 1000)	0.1 (1 in 1000)	0.1 (1 in 1000)	0.1 (1 in 1000)	0.5 (1 in 200)

## LIBERIBACTER

Tolerances for symptoms of *Liberibacter* have been established. Where the tolerance is exceeded the grower or merchant may, at their expense, request that the inspector takes samples and that these are tested for the presence of *Liberibacter*. If the tests do not confirm the presence of *Liberibacter* the seedline may be passed.

## GROUP PROGRAMME TOLERANCES

Seedlines to be certified within the Group programme must meet the tolerances specified for G6 within the pyramid programme.

## 2.7.FIELD INSPECTION

### 2.7.1. NUMBER OF FIELD INSPECTIONS REQUIRED

All seedlines entered will have two inspections, with the exception of Red King Edward, Jersey Benne, Russet Burbank and Russet Ranger or crops with a duration greater than 110 days from planting which require three inspections. The first inspection should be carried before row closure and it is grower's responsibility to get the inspector in, second inspection should be between flowering and haulm destruction in order to spot any rogue/mixed varieties, and third field inspection should be carried as close as practical to haulm destruction. Growers must contact the inspection agency no less than 3 days prior to the proposed haulm destruction date to arrange for the inspection.

Inspectors must complete a 'Field Inspection Form' (refer Appendix 4) and submit completed form to the Administrator.

### 2.7.2. FIELD INSPECTION STANDARDS

All inspectors should inspect a representative sample of the crop, this should be done by walking a percentage of each seedline, which might vary depending on generation and planting population.

- **G0>G1 Harvest** – inspect all the crop (2/3 inspections).
- **G1>G2 Harvest** – inspect all the crop (2/3 inspections).
- **G2>G3 Harvest** – inspect every 12 rows, walking in the first time 6 rows and then 12 rows scanning 5 rows in each side, entering different rows each inspection (2/3 inspections). Third inspection just prior to burn off depending on variety/length of growing season.
- **G3>G4 Harvest** – inspect every 16 rows, walking in the first time 8 rows and then 16 rows scanning 5 rows in each side, entering different rows each inspection (2/3 inspections). Third inspection triggered depending on variety/length of growing season or if a problem occurs half or more of the tolerance at first or second inspection.
- **G4>G5 Harvest** – inspect every 20 rows, walking in the first time 10 rows and then 20 rows scanning 5 rows in each side, entering in different places for each inspection (2/3 inspections). Third inspection triggered depending on variety/length of growing season or if a problem occurs half or more of the tolerance at first or second inspection.
- **G5>G6 Harvest** – inspect every 24 rows, walking in the first time 12 rows and then 24 rows scanning 5 rows in each side, entering in different places for each inspection (2/3 inspections). Third inspection triggered depending on variety/length of growing season or if a problem occurs half or more of the tolerance at first or second inspection.

If a count is required do a minimum of 3 counts per seedline in 3 different areas, walking in each count 100 meters and inspecting a total of 1000 plants. At the end of your 3 counts you will have inspected a minimum of 3000 plants.

Follow the above recommendations on 1st inspection and during 2<sup>nd</sup>/ 3<sup>rd</sup> inspection adapt to field circumstances.

### 2.7.3. SUSPENSION OF INSPECTION

Where an inspector finds faults in a crop that exceed the scheme tolerances, and the inspector believes that corrective actions could be taken by the grower to correct the fault, the inspector may suspend the inspection and allow the grower to take corrective action. The inspector must complete the inspection report and record the options given to the grower.

The grower must be notified in writing of requirements for corrective actions, including the time within which the actions must be completed and a re-inspection undertaken. The inspector should make sure that the grower understands the situation. The grower is responsible for the action to be taken, i.e., carry out corrective measures and request re-inspection.

Inspectors may not allow corrective actions to be taken for the same fault in the same crop twice. If the fault is not corrected the crop concerned will be downgraded or rejected. Upon re-inspection the crop must meet all of the requirements and tolerances of the scheme.

### 2.7.4. DOWNGRADING FOLLOWING FIELD INSPECTION

#### Compulsory Downgrading

Where a seedline within the pyramid programme exceeds the tolerance for its registered generation

it may be down-graded to a lower class (i.e., a higher G number) as long as it does not exceed the tolerance for that generation otherwise it will be rejected completely. This is responsibility of the seed inspector.

### **Voluntary Downgrading**

The grower or merchant can request a voluntary downgrading at any time for a particular seedline to a lower generation.

### **2.7.5. REJECTION FOLLOWING FIELD INSPECTION**

Where a seedline within the group programme exceeds the tolerance for the group programme, it shall be rejected from certification. Where a seedline within the pyramid programme exceeds the tolerance for its registered generation and is unable to be downgraded (as described in 2.6.4) it shall be rejected from certification. Seedlines may be rejected from certification if they fail to meet other requirements of the scheme including, but not limited to:

1. Seedlines are not adequately identified or separated (Section 2.6.1).
2. Plant tops and tubers of rogued plants have not been removed from the field (Section 2.6.3).
3. Seedlines are not compliant with the requirements of the MPI PCN compliance programme (Section 2.3).
4. Haulm destruction has taken place before all necessary field inspections have been completed.

Where a seedline is rejected following field inspection the inspector is required to notify the grower and the Scheme Administrator in writing and discuss the reasons for rejection with the grower.

### **2.7.6. REJECTION OF A PART CROP**

At an inspector's discretion a seedline may be separated and part of the seedline rejected or downgraded with the remaining portion passed. There must be a clearly defined area affected by a fault that exceeds the tolerance for the harvest generation.

Prior to inspection, the grower may also propose to the inspector that the area entered for certification is modified (for example where the grower is aware of a problem in a portion of the crop).

The original seedline entry area must be redefined and the separate areas must be clearly defined and identifiable (e.g., pegged off by markers that can be seen clearly at both ends of the rows). If the area with the fault is to be downgraded rather than rejected, the grower is required to contact the Scheme Administrator and formally enter the downgraded crop area into the data base as an additional entry.

The inspector should ensure that the areas for certification meet the tolerances for the generation.

## **2.8. APPEALS**

Where a grower wishes to appeal the decision of an inspector to reject a crop from certification an appeal must be lodged with the Secretary within 24 hours of being notified in writing of the Inspector's decision.

The grower must not improve the crop in any way before the Secretary visit.

Appeals must be made in writing (email is acceptable) specifying:

- Crop registration details (ROP, paddock code, variety, class, area sown);
- Name of the inspection body;
- The reason for the appeal.

An appeal fee of \$1000 plus GST per production site under appeal is payable at the time of lodging an appeal. The Secretary will hear the appeal. The Secretary will collect all relevant information and discuss the appeal with the grower and the inspector. The grower will have the opportunity to make the case supporting the appeal. The Secretary will normally visit the crop under appeal, without the presence of the grower and inspector.

The grower must not attempt to influence the Secretary during crop inspection or contact members of the Authority regarding the appeal.

The outcome of the appeal will be a Secretary decision that the crop either passes certification at the intended classification, is rejected from certification, or is downgraded to a lower classification. The stated reason for the appeal, as well as compliance with the requirements of the scheme, will be factors in the Secretary decision.

## **2.9. HARVESTING AND GRADING**

### **2.9.1. TRACEABILITY**

To ensure traceability of seedlines and to avoid contamination, all containers must be labelled prior to leaving the paddock at harvest. Minimum information on the label is the crop reference number, ROP number and paddock letter. Crop reference numbers are available from the Administrator or the Potatoes New Zealand website. Each seedline must be readily identifiable with the same information when in storage after harvest.

### **2.9.2. TOLERANCES FOR FAULTS AT TUBER INSPECTION**

Tolerances for faults at tuber inspection in the Pyramid and Group programmes are described below. These do not apply to Field Certified seedlines. Tolerances for scab, rhizoctonia, sizing and misshapen tubers are described separately, and the tolerances for the remaining faults are presented in Table 2.

#### **SCAB**

The maximum tolerance for powdery scab and common scab is 1% of tubers and common scab with 5% of the surface area covered with scab, within any generation of the pyramid programme or in the group programme.

If scab is present (regardless of type) on more than 1 tuber in any of the 100 tuber samples drawn, an additional randomly selected sample of 500 tubers is to be drawn. Where more than 5 tubers in the 500 sample show any presence of scab, the grower must have the scab type identified by a laboratory. The test result must be forwarded to the inspector. Where the level of powdery scab exceeds 1% the line will be rejected. Where the level of common scab exceeds 1% the seed certification label will be endorsed with common scab and the percentage written on the ticket. The result will also be recorded on the official tuber inspection report and the buyer will be informed.

## RHIZOCTONIA

The maximum tolerance for rhizoctonia is 5% of tubers each with 5% of the surface area covered with rhizoctonia, i.e., for each 100 tubers inspected, rejection will occur if more than 5 tubers have more than 5% surface covered with rhizoctonia.

## SIZING

The minimum size of seed acceptable for certification is 28mm or 30g. Exceptions will be allowed for trial plots or multiplication plots of mini tubers etc. For seed with a maximum diameter of 55mm, the maximum permitted length is 85mm, and for 60mm diameter seed the maximum permitted length is 90mm. No more than 5% of tubers should be over length for the size diameter range. Any lots that exceed this tolerance must be recorded on the tuber inspection report and on the seed label, and buyer must be informed. Guideline instead of a rule.

## MISSHAPEN TUBERS

If misshapen tubers are more than 4% in any of the 100 tuber samples drawn, the % of misshapen tubers must be printed on the seed certification label.

## OTHER FAULTS

The maximum allowable faults and diseases are described in Table 2 and 3. The maximum tolerances described in Table 2 must not be exceeded for any individual fault, or in combination. For example, if a lot has >2% stem end rot the lot will fail even if the total faults do not exceed the combined maximum faults.

**Table 2. Maximum allowable faults in a tuber sample within the group programme and all generations of the pyramid programme (refer also separate tolerances for scab, rhizoctonia, size and misshapen tubers).**

<b>Fault type</b>	<b>Maximum %</b>
Potato Tuber Moth/insect damage	4
External damage (not infected, as lesions deeper than 2mm into the tuber)	4
Stem end rot	2
<b>Combined maximum faults</b>	<b>5</b>

**Table 3. Maximum allowable diseases in a tuber sample within the group programme and all generations of the pyramid programme.**

<b>Diseases</b>	<b>Maximum %</b>
Wet rot	0.1
Dry rot (Fusarium/Gangrene)	1
Root knot nematode	2

### 2.9.3. OFFICIAL TUBER INSPECTION

Seed potatoes for certification must be officially inspected at any point when ownership of that seed changes hands, except for 'Field Certified' lines. Seed lots exceeding specified tolerances will be rejected from certification.

Inspectors must complete a 'Tuber Inspection Form' (refer Appendix 4) for each seed lot inspected and submit completed form to the Administrator. Each form has a seed lot number assigned (four-

digit number follow by inspector code), which define a specified volume of seed from a particular seedline and a particular seed size range.

## **TUBER INSPECTION PROTOCOL**

<b>Tuber Consignment (Tonnes)</b>	<b>Sample Size (Tubers)</b>	<b>Minimum Number of bins to be sampled</b>
<10	100	4
10 - 20	200	4
20 - 30	300	4
30 - 40	400	4
40 - 50	500	5
50 - 60	600	6

### **2.10. STORAGE**

Storage is outside the scope of the Scheme, however it is recommended that good seed potato storage practices are followed. Best practice guidelines can be found on the potatoes New Zealand website.

## **3. CERTIFICATION OF SEED LOTS**

The Authority will approve organisations to issue, on its behalf, seed certification labels. Seed certification labels must conform to the format described in Appendix 1. The Potatoes New Zealand Inc. logo, coloured line and G-numeral combination is a trademark of Potatoes New Zealand Inc. Labels may not be reformatted to change the relative size or location of the Potatoes New Zealand Inc. logo, coloured line and G-numeral combination.

Seed certification labels may only be issued when all requirements of the Scheme have been met. Prior to issuing seed certification labels the organisation undertaking this activity must also verify that crops have a PCN "compliant" status (refer to the MPI website).

Seed certification labels are issued signifying the final stage of certification and must be attached to the container. Seed tubers not bearing an official seed certification label cannot be sold as Certified Seed.

Seed certification labels remain the property of the Authority and may be withdrawn or recalled at any time if the Authority has reason to believe that the relevant seedline was not eligible for certification or that certification was incorrectly issued.

## **4. REQUIREMENTS FOR MERCHANTS**

### **4.1. REGISTRATION OF MERCHANTS**

All Merchants must be registered in the Scheme. The 'New Grower – Merchant Registration Form' (refer Appendix 4) must be completed. Registration forms are available from the Administrator or from the Potatoes New Zealand website. Submit applications to the Administrator.

### **4.2. REGISTRATION OF NEW VARIETIES**

New varieties must be registered with the Administrator before grower applications will be accepted. 'Variety Registration Form' (refer Appendix 4) must be completed and submitted to the Administrator.

The following conditions must be met and the required information provided before new varieties can be registered:

1. New varieties will only be accepted for certification on the authority of the breeder, rights holder, or authorised agents.
2. All varieties entering the scheme must clearly state the material's origin, provide description of varietal characteristics and photos, and be entered using the commonly known variety name, PVR denomination (where that exists), or an acceptable breeder reference code. All entered material must comply with the PVR Act and UPOV obligations.
3. Entries of areas sown with a selection from an established variety may be accepted at the discretion of the Authority.

#### **4.3. UPGRADING SEEDLINES**

Seedlines within the pyramid programme are automatically downgraded by one generation between crop cycles (e.g., G3 seed that is planted is registered as G4). However, in the following circumstances a merchant may apply to the Authority to upgrade a portion of that seedline:

1. Where there is a total loss of a classification of a variety, a portion (not to exceed the area of the lost classification) of the next lower classification may be held back in that classification, provided that it meets the field tolerances of the higher classification that it is to replace.
2. Where there is a significant partial loss of classification, to such an extent that stocks of the classification will be so short that hardship through the lack of stock will result, a portion (not to exceed the area of that lost), of the next lower classification may be held back in that classification provided that it meets the field health standard of the higher classification that it is to replace.

Merchants must notify the Administrator with details of the seedline to be upgraded describing the justification for the application including the cause of the total or partial loss, the seedlines numbers, varieties, and areas involved. The Administrator will include this information in reports to the Authority.

#### **4.4. DOWNGRADING SEEDLINES**

**Seedlines may be downgraded in the following circumstances:**

1. Commercial downgrading. Lines may be voluntarily downgraded to a lower classification (a higher G number) providing the lines meet the tolerances and requirements for the intended classification (G number).
2. Due to failure to meet the tolerances for a specified class of seed .
3. From Pyramid to 'Field Certified'.

#### **4.5. G2 VIRUS TESTING**

Merchants or growers must collect leaf samples from all G2 registered crops (i.e., G2 harvested) and submit these for virus testing by a laboratory approved by the Authority. Samples must be taken according to the following procedure:

1. Aim for representative coverage of the crop with the sampling pattern.
2. Sample in a W or zig-zag (e.g., WWW) pattern depending on the size and shape of the crop.
3. Determine the number of paces required for the given sample size in order to cover as much of the crop as possible using the W or zig-zag pattern.

4. Take the required number of steps, stop, reach down to the plant nearest the right or left foot (be consistent).
5. Select a leaf within the top ¼ of the plant and select 1 leaflet per plant.
6. Group in lots of 10 in bags (where appropriate).
7. Clearly label with the crop reference number and other information required on the Virus Sample Submission Form.
8. Store in a cooler bag/chilly bin until dispatch (do not freeze).
9. Complete the Potato virus sample submission form (refer Appendix 4) and dispatch to the laboratory.

The following 3 sampling options are available depending on the size of the G2 plot:

- A) Collect 1 leaf from 100 plants and test 10x10 (10 tests).
- B) Collect 1 leaf from 10 separate plants and test 1x10 (10 tests) for small plots.
- C) Collect 1 leaf from 20 separate plants and test 10x2 (2 tests).

Test results must be forwarded to the sample submitter and a copy to the Scheme Administrator. If more than one sample out of ten (from ten x ten leaf sub-samples – option A & B) tests positive then the line must be removed from the scheme.

If one sample (option A & B) out of ten tests positive then the G2 label must be endorsed “failed G2 virus test” and the seedline will be subject to a compulsory virus test at G3. The G3 line is subject to the same criteria as G2 lines. Continued failure will require G4, G5 and G6 lines also being tested as above.

If the result from option C tests positive either re-test 1x10 (10 tests) or 10x10 (10 tests) in the same season or retest 10x10 (10 tests) the following season.

If the G2 virus test is missed completely, the seedline will be subject to a compulsory virus test at the next generation and the G2 label will be endorsed with “Virus test not completed”. If the virus test is missed again at G3 the seedline will be uncertified.

#### **4.6. LABELS**

Seed certification labels must conform to the format described in Appendix 1. Space is provided on the label for merchant information and barcode which may be used or omitted at the discretion of the merchant. The Potatoes New Zealand Inc. logo, coloured line and G-numeral combination is a trademark of Potatoes New Zealand Inc. Labels may not be reformatted to change the relative size or location of the Potatoes New Zealand Inc. logo, coloured line and G-numeral combination.

## **5. REQUIREMENTS FOR INSPECTORS**

The Authority authorizes Potatoes New Zealand to undertake field and tuber inspections internally. When PNZ is not able to deliver these services, the Authority will contract



organisations to undertake the inspections, verify grower requirements are met, and issue seed certification labels. The Authority also operates a process of approval of organisations to undertake field and tuber inspection of their contracted growers' crops as part of documented and reviewed quality assurance systems.

### **5.1. TECHNICAL REQUIREMENTS**

Inspectors (PNZ, contracted inspection service providers or Approved Organisations) must meet the requirements of the 'MPI Technical Standard: Pest Freedom Survey'. Seed potato inspection services must be delivered with sufficient and appropriately trained and competent personnel to ensure accurate and timely provision of inspection services.

### **5.2. DOCUMENTED PROCEDURES**

Inspectors must document, maintain, and adhere to procedures for seed potato crop and seed potato tuber inspection activities. Documented procedures will be evaluated by a reviewer appointed by the Authority prior to commencement of service. Compliance with procedures and the Scheme requirements will be reviewed by the Authority.

### **5.3. STAFF COMPETENCY**

Inspectors are required to undergo training approved by the Authority.

Approved organisations are required to document their competency assessment processes as described in Section 6.

For organisations contracted by the Authority new inspectors training will be done in house via in field training with experienced certification officers. Inspector competency will be audited by the Authority.

### **5.4. VERIFICATION ACTIVITIES**

In the course of conducting field and tuber inspections, inspectors must verify that certain grower activities have been undertaken, as specified in the Scheme. These include, but are not limited to:

1. Seedlines meet separation and identification requirements where differing seedlines are planted in one field or are planted in the same field as table crops;
2. Seedlines are identifiable throughout the growing season, at harvest and in storage;
3. Rogued plants and tubers have been removed from the field;
4. Harvested crops are labelled correctly.

## **6. REQUIREMENTS FOR APPROVED ORGANISATIONS**

As described in Section 1.3.4, the Authority provides an option whereby organisations (e.g., seed merchants) may be approved to undertake inspection activities on behalf of the Authority.

Approved organisations must maintain a documented system containing procedures for meeting the requirements of this Scheme. Procedures for staff competency must also be documented.

Organisations must:

1. Specify the person(s) with overall responsibility for management of the organisation's system, the competency required and their job description;
2. Identify the competencies required for each seed certification activity;
3. Have a sufficient number of staff with the necessary competence to undertake these activities;
4. Implement safeguards to ensure staff engaged in seed certification decisions are free from commercial interest in their decisions;
5. Describe the method used to assess staff competency to undertake seed certification activities within the organisation's system; and
6. Describe how these competencies are maintained on an ongoing basis.

To obtain approval, Organisations must apply to the Authority by contacting the Secretary. The Secretary will provide further information on the application and approval process. Reviewers will evaluate the Organisation's procedures and conduct reviews. The review frequency will be that defined in MPI Technical Standard "Audit" for Risk Category – Level 2. One field and one tuber inspection review (or vice versa) plus one systems review.

Upon satisfactory completion of evaluations and reviews, the reviewer will make a written recommendation to the Authority. The Authority will consider the recommendation and where appropriate sign a contract of approval with the Organisation.

An annual Approved Organisation fee applies as set by the Authority from time to time.

## **7. REQUIREMENTS FOR REVIEWERS**

Reviewers of Approved Organisations must be approved by the Seed Authority. Reviewers must also have in place procedures to ensure competency to review seed potato field and tuber inspections.

## **8. REQUIREMENTS FOR TISSUE CULTURE LABORATORIES AND MINI-TUBER PRODUCTION FACILITIES**

All material entering the pyramid or group programmes for certification must have been produced in an approved tissue culture laboratory or mini-tuber production facility meeting the standards described in Appendix 2 and Appendix 3. The Authority will maintain a register of approved facilities.

A 'Certificate of Origin – G0 Material form' (refer Appendix 4) must be provided by the tissue culture laboratory or mini-tuber production facility to the Scheme Administrator for all material entering the Scheme as G0. The required form includes the following information:

- |                                                     |                                                                                        |
|-----------------------------------------------------|----------------------------------------------------------------------------------------|
| 1. Name of register supplier.                       | 5. Quantity of material (weight of mini-tubers or number of tissue culture plantlets). |
| 2. Client.                                          | 6. Name of seed grower material supplied to.                                           |
| 3. Type of material (tissue culture or mini-tuber). | 7. Crop reference number (completed by PNZ).                                           |
| 4. Variety.                                         |                                                                                        |

Any tissue culture or mini-tubers not produced in an approved tissue culture laboratory or mini-tuber production facility will not be registered.

Once the 'Certificate of Origin – G0 Material form' is received, all the data is recorded and PNZ will allocate a Crop Reference No. to each seedline. The completed 'Certificate of Origin – G0 Material' will then be forwarded to the tissue culture laboratory or mini-tuber production facility for their records.

## 9. CONTACTS

### SECRETARY

**Iain Kirkwood**

**Mobile:** 027 240 1092

**Phone:** 0800 399 674

**Email:** [Iain.Kirkwood@potatoesnz.co.nz](mailto:Iain.Kirkwood@potatoesnz.co.nz)

### ADMINISTRATOR

**Paula Lleras** – Administration

**Mobile:** 027 263 8427

**Email:** [Paula.Lleras@potatoesnz.co.nz](mailto:Paula.Lleras@potatoesnz.co.nz)

### INSPECTORS

**AsureQuality**

**Justin Salter** – North Island Inspections  
(AsureQuality)

**Mobile:** 021 967 844

**Email:** [Justin.Salter@asurequality.com](mailto:Justin.Salter@asurequality.com)

**Potatoes New Zealand Inc**

**Cyril Hickman** – Inspector

**Mobile:** 027 276 6664

**Email:** [cyril.hickman@potatoesnz.co.nz](mailto:cyril.hickman@potatoesnz.co.nz)

**Tristan Hickman** – Inspector

**Mobile:** 027 233 3865

**Email:** [tristan.hickman@potatoesnz.co.nz](mailto:tristan.hickman@potatoesnz.co.nz)

**Paula Lleras** – Inspector

**Mobile:** 027 263 8427

**Email:** [Paula.Lleras@potatoesnz.co.nz](mailto:Paula.Lleras@potatoesnz.co.nz)

**Website:** [www.potatoesnz.co.nz](http://www.potatoesnz.co.nz)










## APPENDIX 1: SEED CERTIFICATION LABELS

Seed certification labels must conform to the format contained in this Appendix. Space is provided on the label for merchant information and barcode which may be used or omitted at the discretion of the merchant. Labels may not be reformatted to change the relative size or location of the Potatoes New Zealand Inc. logo, coloured line and G-numeral combination.


The Potatoes New Zealand Inc. logo, coloured line and G-numeral combination is a trademark of Potatoes New Zealand Inc.

 <div style="border: 1px solid black; padding: 5px; margin-top: 10px;"> Bar Code size  EAN8 – EAN13  95% Tolerance </div>		<p><b>Certified Seed Potatoes</b></p> <p>Variety:</p> <p>Size:</p> <p>Crop Ref. #.</p> <p>ROP:</p> <p>Inspection Date:</p> <p>Grower:</p> <p>Inspection Authority:</p> <p style="text-align: center;"><sup>TM</sup> <b>G1</b></p> <p><small>The Potatoes New Zealand Inc logo, coloured line and G-numeral combination is trademark of Potatoes New Zealand Inc</small></p>	<p style="text-align: center;">Merchant Logo/ Information</p>
--------------------------------------------------------------------------------------------------------------------------------------------------------------------------------------------------------------------	--	---------------------------------------------------------------------------------------------------------------------------------------------------------------------------------------------------------------------------------------------------------------------------------------------------------------------------------------------------------------------------------	-----------------------------------------------------------------------


 <div style="border: 1px solid black; padding: 5px; margin-top: 10px;"> Bar Code size  EAN8 – EAN13  95% Tolerance </div>		<p><b>Certified Seed Potatoes</b></p> <p>Variety:</p> <p>Size:</p> <p>Crop Ref. #.</p> <p>ROP:</p> <p>Inspection Date:</p> <p>Grower:</p> <p>Inspection Authority:</p> <p style="text-align: center;"><sup>TM</sup> <b>G2</b></p> <p><small>The Potatoes New Zealand Inc logo, coloured line and G-numeral combination is trademark of Potatoes New Zealand Inc</small></p>	<p style="text-align: center;">Merchant Logo/ Information</p>
----------------------------------------------------------------------------------------------------------------------------------------------------------------------------------------------------------------------	--	---------------------------------------------------------------------------------------------------------------------------------------------------------------------------------------------------------------------------------------------------------------------------------------------------------------------------------------------------------------------------------	-----------------------------------------------------------------------

 <div data-bbox="161 658 437 864" style="border: 1px solid black; padding: 5px; margin-top: 10px;"> Bar Code size  EAN8 – EAN13  95% Tolerance </div>	<div style="display: flex; align-items: center; justify-content: center;"> <div style="margin-right: 10px;">TM</div> <div style="font-size: 48px; font-weight: bold;">G3</div> </div>	<div style="text-align: center;"> <b>Certified Seed Potatoes</b>  Variety:  Size:  Crop Ref. #.  ROP:  Inspection Date:  Grower:  Inspection Authority: </div> <div style="border: 1px dashed black; padding: 10px; margin-top: 20px; text-align: center;"> Merchant Logo/ Information </div>
------------------------------------------------------------------------------------------------------------------------------------------------------------------------------------------------------------------------------------------------	---------------------------------------------------------------------------------------------------------------------------------------------------------------------------------------	-----------------------------------------------------------------------------------------------------------------------------------------------------------------------------------------------------------------------------------------------------------------------------------------------------------------------------------


The Potatoes New Zealand Inc logo, coloured line and G-numeral combination is trademark of Potatoes New Zealand Inc

 <div data-bbox="161 1189 437 1404" style="border: 1px solid black; padding: 5px; margin-top: 10px;"> Bar Code size  EAN8 – EAN13  95% Tolerance </div>	<div style="display: flex; align-items: center; justify-content: center;"> <div style="margin-right: 10px;">TM</div> <div style="font-size: 48px; font-weight: bold;">G4</div> </div>	<div style="text-align: center;"> <b>Certified Seed Potatoes</b>  Variety:  Size:  Crop Ref. #.  ROP:  Inspection Date:  Grower:  Inspection Authority: </div> <div style="border: 1px dashed black; padding: 10px; margin-top: 20px; text-align: center;"> Merchant Logo/ Information </div>
---------------------------------------------------------------------------------------------------------------------------------------------------------------------------------------------------------------------------------------------------	---------------------------------------------------------------------------------------------------------------------------------------------------------------------------------------	-----------------------------------------------------------------------------------------------------------------------------------------------------------------------------------------------------------------------------------------------------------------------------------------------------------------------------------

The Potatoes New Zealand Inc logo, coloured line and G-numeral combination is trademark of Potatoes New Zealand Inc


 <div data-bbox="161 1720 437 1933" style="border: 1px solid black; padding: 5px; margin-top: 10px;"> Bar Code size  EAN8 – EAN13  95% Tolerance </div>	<div style="display: flex; align-items: center; justify-content: center;"> <div style="margin-right: 10px;">TM</div> <div style="font-size: 48px; font-weight: bold;">G5</div> </div>	<div style="text-align: center;"> <b>Certified Seed Potatoes</b>  Variety:  Size:  Crop Ref. #.  ROP:  Inspection Date:  Grower:  Inspection Authority: </div> <div style="border: 1px dashed black; padding: 10px; margin-top: 20px; text-align: center;"> Merchant Logo/ Information </div>
----------------------------------------------------------------------------------------------------------------------------------------------------------------------------------------------------------------------------------------------------	---------------------------------------------------------------------------------------------------------------------------------------------------------------------------------------	-----------------------------------------------------------------------------------------------------------------------------------------------------------------------------------------------------------------------------------------------------------------------------------------------------------------------------------

The Potatoes New Zealand Inc logo, coloured line and G-numeral combination is trademark of Potatoes New Zealand Inc

 <div data-bbox="204 658 477 875" style="border: 1px solid black; padding: 5px; margin-top: 10px;"> Bar Code size  EAN8 – EAN13  95% Tolerance </div>		<p><b>Certified Seed Potatoes</b></p> <p>Variety:</p> <p>Size:</p> <p>Crop Ref. #.</p> <p>ROP:</p> <p>Inspection Date:</p> <p>Grower:</p> <p>Inspection Authority:</p> <div data-bbox="571 638 721 761" style="font-size: 48px; font-weight: bold; margin-top: 20px;"> <sup>TM</sup>  G6 </div>	<div data-bbox="1203 555 1337 663" style="text-align: center; padding: 20px;"> Merchant  Logo/  Information </div>
------------------------------------------------------------------------------------------------------------------------------------------------------------------------------------------------------------------------------------------------	--	-----------------------------------------------------------------------------------------------------------------------------------------------------------------------------------------------------------------------------------------------------------------------------------------------------	----------------------------------------------------------------------------------------------------------------------------

The Potatoes New Zealand Inc logo, coloured line and G-numeral combination is trademark of Potatoes New Zealand Inc

## GROUP PROGRAMME LABEL

 <div data-bbox="279 1433 670 1556" style="font-size: 48px; font-weight: bold; margin-top: 20px;"> Group 1 </div>	<p><b>Certified Seed Potatoes</b></p> <p>Variety:</p> <p>Size:</p> <p>Crop Ref. #.</p> <p>ROP:</p> <p>Inspection Date:</p> <p>Grower:</p> <p>Inspection Authority:</p>
------------------------------------------------------------------------------------------------------------------------------------------------------------------------------------------------------	------------------------------------------------------------------------------------------------------------------------------------------------------------------------

The Potatoes New Zealand Inc logo, coloured line and G-numeral combination is trademark of Potatoes New Zealand Inc

## APPENDIX 2: MINIMUM CONDITIONS TO BE SATISFIED BY REGISTERED LABORATORIES FOR THE PRODUCTION OF TISSUE CULTURE FOR CERTIFIED SEED POTATOES

1. Tissue culture laboratories must be housed in a secured building and only allow entry of authorised personnel.
2. The initial stock entering the tissue culture (TC) laboratory multiplication programme must be tested free from at least the following pathogens;
  - Potato Spindle Tuber viroid
  - *Clavibacter michiganensis* spp. *sepedonicus* (ring rot)
  - *Ralstonia solanacearum* (brown rot)
  - *Pectobacterium* spp. and *Dickeya* spp. including *Dickeya solani*, *Dickeya chrysanthemi* pv. *chrysanthemi*, *Dickeya chrysanthemi* pv. *parthenii*, *Dickeya paradisiaca*, *Pectobacterium betavascularum*, *Pectobacterium polaris*
  - Potato viruses, X, Y, S, M, A, TRV and Potato Mop Top Virus
  - Potato Leaf roll virus
  - *Candidatus Liberibacter solanacearum*

Records are to be kept of testing and sources of original material. Commercial confidentiality is to be maintained.

3. Every ten years all lines being maintained for active production of tissue culture for certified seed production must be subject to laboratory testing for:
  - *Pectobacterium* spp. and *Dickeya* spp. including *Dickeya solani*, *Dickeya chrysanthemi* pv. *chrysanthemi*, *Dickeya chrysanthemi* pv. *parthenii*, *Dickeya paradisiaca*, *Pectobacterium betavascularum*, *Pectobacterium polaris*
  - Potato viruses, X, Y, S, M, A, TRV and Potato Mop Top Virus
  - Potato Leaf roll virus
  - *Candidatus Liberibacter solanacearum*. Positive detections must be removed from the scheme.
4. Appropriate sterile laboratory procedures must be applied to avoid contamination of the cultured plant material, e.g., use of sterile tools, laminar flow hood and sterile growing media for aseptic multiplication of plant material, dedicated clothing for operators (e.g., lab coat, overshoes).



5. Regular visual monitoring of the growing tissue culture plants shall be conducted to ensure no contamination has occurred.
6. Regular cleaning of all laboratory surfaces including media preparation and growth room. Regular use of insecticide in laboratory to ensure no mites, spiders, or other insects can reside.
7. Records are to be kept to facilitate traceability of all lines.
8. A 'Certificate of Origin – G0 Material form' (refer Appendix 4) must be provided to the Scheme Administrator by the tissue culture laboratory. The required form includes the following information:
  - Name of register supplier.
  - Client.
  - Type of material (tissue culture).
  - Variety.
  - Quantity of material (number of tissue culture plantlets).
  - Name of seed grower material supplied to.
  - Crop reference number (completed by PNZ).
9. The satisfaction of the conditions under items 2 & 3 shall be established by appropriate tests for those pathogens known to occur in New Zealand (i.e., ELISA or preferably PCR).
10. In order to remain compliant, the tissue culture laboratories must be audited by Potatoes New Zealand every two years.

## **APPENDIX 3: REQUIREMENTS FOR REGISTERED FACILITIES FOR THE PRODUCTION OF MINI-TUBERS FOR CERTIFIED SEED PRODUCTION**

### **Physical structure**

- Double door entry with a change area for changing garments and donning protective overcoats and gloves, the change area to contain foot disinfecting pads and a facility for disinfecting hands.
- Entry doors insect proof and all vents and openings covered with insect-proof screens that will prevent entry of the local pests and pest vectors.
- Gaps between the external to internal environment to be sealed.
- Production isolated from soil (e.g., concrete floors or floors covered with a protective membrane).
- Designated areas for washing and disinfecting containers, and cleaning, grading, packing and storing mini-tubers.
- In places where there is unreliable supply of electricity and water, standby facilities for emergencies.

### **Management of environment**

- Suitable temperature, light, air circulation and humidity controls.

### **Crop management**

- Regular pest and pest vector monitoring (e.g., using sticky insect traps) at specified intervals.
- Hygienic practices for handling plant material.
- Correct disposal procedures.
- Identification of production lots.
- A suitable separation between lots.
- Appropriate disease management programme.

### **Growing media, fertilizer, water**

- Use of new, soil-less growing medium (e.g., potting media, artificial media, peat).
- Storage of growing medium under conditions preventing contamination.
- A water supply free of plant pests (either treated water or deep-well spring water).
- Use of inorganic fertilizer.

### **Post-harvest handling**

- Suitable storage conditions.
- Grading and packing (if appropriate, according to a seed potato certification scheme).
- New or adequately sterilized containers used for packing mini-tubers.
- Containers for shipment adequate for preventing contamination by pests and pest vectors.
- Adequate cleaning and disinfection of handling equipment and storage facilities.

### **Traceability**

- Records are to be kept to facilitate traceability of all lines.
- A 'Certificate of Origin – G0 Material form' (refer Appendix 4) must be provided by the mini- tuber production facility to the Scheme Administrator. The required form includes the following information:
  - Name of register supplier.
  - Client.
  - Type of material (mini-tuber).
  - Variety.
  - Quantity of material (weight of mini-tubers).
  - Name of seed grower material supplied to.
  - Crop reference number (completed by PNZ).
- In order to remain compliant, the mini- tuber production facility must be audited by Potatoes New Zealand every two years.

## APPENDIX 4: Seed Certification Forms

### GROWER - MERCHANT REGISTRATION FOR THE NEW ZEALAND SEED POTATO CERTIFICATION SCHEME

The New Zealand Seed Potato Certification Authority ("NZSPCA"), a subcommittee of Potatoes New Zealand Incorporated, operates a non-statutory seed potato certification scheme to provide assurance that certified seed lines meet the minimum standards for disease freedom and trueness to type that are specified by the Authority. Seed potatoes certified under the scheme meet the requirements and tolerances of the scheme at the time that field and tuber inspections are carried out. Grower requirements are verified through the growing cycle (identification of sown crops, separation of varieties, traceability) and at tuber inspection. Field inspections are undertaken to ensure tolerances for virus, diseases, and varietal purity are not exceeded.

#### Grower and/or Merchant must complete this Registration Form

Trading Name

---

Primary Contact

---

Postal Address

---

---

Email

Mobile

---

Before completing the form, you are ADVISED TO CAREFULLY READ and agree to the following conditions of registration, in consideration of NZSPCA's operation of the Scheme:

#### 1. Supply of Information

The Grower/Merchant warrants that all information in any written or oral form supplied to the NZSPCA administration and inspection contractors, in relation to the production, processing, storage and transport of certified potatoes shall be correct in all respects.

#### 2. Access

Grower/Merchant will permit any person authorised by the NZSPCA access at reasonable times to areas, crops, machinery, plant, storage facilities or any other thing used by the Grower/Merchant in the supply of potatoes intended for certification.

#### 3. Standards

Grower/Merchant will apply the standards and procedures of the NZSPCA. These are available on the Potatoes NZ web site (<http://www.potatoesnz.co.nz>) or from the scheme administrator.

#### 4. Adulteration of Seed

Grower/Merchant will not, in respect of certified potatoes to be sown or harvested, add to or substitute potatoes of any other cultivar, which will adulterate or otherwise change the certified potato lot.

## 5. Labelling of Seed

Grower/Merchant will ensure the identity of individual certified seed potatoes is maintained and labels showing the unique Crop Reference Number for that line, the cultivar name and the Region of Production number are attached to all containers.

## 6. Liability

Grower/Merchant will indemnify NZSPCA and Potatoes New Zealand Incorporated and their contractors against any losses (including costs) arising from failure, breach or negligent performance by the Grower/Merchant of:

- a) Conditions of this Agreement.
- b) Requirements or instructions supplied by NZSPCA and its contractors as to sowing, growing, harvesting or identification of potatoes submitted by the grower for certification under the Scheme.

## 7. Operation of the Scheme

Potatoes New Zealand Incorporated acting through the NZSPCA will provide a Seed Potato Certification Scheme operated in accordance with the standards established by the NZSPCA and as amended from time to time.

## 8. Cancellation of Registration

Where any of the conditions imposed by this agreement are breached or negligently performed by the Grower/Merchant, NZSPCA may, after consulting with their appointed contractors and after considering any submissions made in writing by the Grower/Merchant, remove the Grower/Merchant from the Scheme by cancellation of registration and that such removal may be permanent or for such period as NZSPCA decides.

**Grower/Merchant to sign** \_\_\_\_\_

**Date:** \_\_\_\_\_ day of \_\_\_\_\_ (Month) \_\_\_\_\_ (Year)

**Registration is hereby granted by** \_\_\_\_\_  
(Secretary NZSPCA)

**Date:** \_\_\_\_\_ day of \_\_\_\_\_ (Month) \_\_\_\_\_ (Year)

**Email completed form:** [accounts@potatoesnz.co.nz](mailto:accounts@potatoesnz.co.nz)

**And/or courier:** Potatoes New Zealand, PO Box 10232, The Terrace, Wellington 6143

New Zealand Seed Potato Certification Authority

# APPLICATION FOR SEED POTATO CERTIFICATION

This application can also be completed in Excel - see PNZ website



Trading Name: ..... Primary Contact: .....

Postal Address: ..... Phone: .....

..... Mobile: .....

Email: ..... Fax: .....

ADMINISTRATION USE ONLY	Entry 1	Entry 2	Entry 3	Entry 4
<b>CROP REFERENCE NUMBER</b>				

*Please use only for Standard Entries (see additional notes)*

CROP INFORMATION	Entry 1	Entry 2	Entry 3	Entry 4
ROP No. (Region of Production)				
Paddock Letter				
Date Planted				
Seed Sown Reference No.				
Variety				
Generation Planted				
Generation Harvested				
Type - Group/Pyramid				
Inspection Body - PNZ/AsureQuality				
Paddock Area (Ha)				
Crop Area (Ha)				
Contract Merchant				
IVA for PCN/Wart Survey				
NZGAP Number				
<u>Paddock History</u> Last Year 2 Years Ago 3 Years Ago 4 Years Ago 5 Years Ago				

**I hereby certify that no seed, other than that described above has been planted in the area, and that I agree to abide by the rules of the Authority.**

## CONDITIONS FOR ACCEPTANCE OF THIS APPLICATION.

1. The Applicant and Farm where crop is grown must be registered with AsureQuality Limited.
2. Fees for entries will be invoiced directly by Potatoes NZ, no payment is required at the time of registration.

**SIGNATURE:** ..... **DATE:** .....

**Email completed form:** [accounts@potatoesnz.co.nz](mailto:accounts@potatoesnz.co.nz) **And/or courier:** Potatoes New Zealand, PO Box 10232, The Terrace, Wellington 6143

## ADDITIONAL NOTES:

1. Please use this form only for “standard” entries (those where field and tuber inspections are carried out by AsureQuality or PNZ). Send “approved organization” entries directly to Eurogrow. Eurogrow will liaise with the scheme administrator.
2. The Crop Reference Number box shows the unique crop numbering system. This number is printed on the certification tags and also listed in the Seed Potato Certification List of certified crop grower’s booklet.
3. Inspection Body Standard refers to crops entered directly through the scheme administrator. Approved Organisation (AO) refers to crops entered through an organization approved by the Authority.
4. Remember to sign your entry.
5. If a farm you want to grow a crop on does not have an official Farm number (ROP No.), contact the Seed Certification Bureau.
6. **Closing Dates: 21 days after planting** (Remember we need to process your entry and send the inspection form to the inspector BEFORE the 1st inspection is due).

Planting Site Plan for multiple crop entries in one paddock
<ol style="list-style-type: none"><li>1. Please provide a Farm Map with the GPS coordinates/location of the paddock. Indicate North.</li><li>2. Please provide a Plot Map and ensure each entry is clearly marked with variety name, harvested generation and seed sown reference number (if necessary).</li></ol>
<div></div>



Email completed form: [accounts@potatoesnz.co.nz](mailto:accounts@potatoesnz.co.nz) And/or courier: Potatoes New Zealand, PO Box 10232, The Terrace, Wellington 6143







## SEED POTATO FIELD INSPECTION REPORT

Trading Name	<input type="text"/>	Primary Contact	<input type="text"/>	Crop Reference No.	<input type="text"/>
Mobile	<input type="text"/>	Variety	<input type="text"/>	Crop Area (Ha)	<input type="text"/>
ROP No.	<input type="text"/>	Generation Planted	<input type="text"/>	Generation Harvested	<input type="text"/>
Paddock Letter	<input type="text"/>	Date Planted	<input type="text"/>		

Paddock Name and/or Location and/or Address

First Inspection		Date Actual	<input type="text"/>	Inspector Name	<input type="text"/>
				Comments	Counts - %
Viruses	<input type="text" value="Pass / Fail / Provisional"/>				
Bacteria	<input type="text" value="Pass / Fail / Provisional"/>				
Fungi	<input type="text" value="Pass / Fail / Provisional"/>				
Rogues (Ground Keepers, Foreigners and Off Types)	<input type="text" value="Pass / Fail / Provisional"/>				
Rule Compliance (Crop Separation, Hygiene, Weeds, Chemical Damage and Labelling)	<input type="text" value="Pass / Fail / Provisional"/>				

Second Inspection		Date Actual	<input type="text"/>	Inspector Name	<input type="text"/>
				Comments	Counts - %
Viruses	<input type="text" value="Pass / Fail"/>				
Bacteria	<input type="text" value="Pass / Fail"/>				
Fungi	<input type="text" value="Pass / Fail"/>				
Rogues (Ground Keepers, Foreigners and Off Types)	<input type="text" value="Pass / Fail"/>				
Rule Compliance (Crop Separation, Hygiene, Weeds, Chemical Damage and Labelling)	<input type="text" value="Pass / Fail"/>				

Biosecurity	<input type="text"/>	Action Taken	Call 0800 80 99 66	Y/N	<input type="text"/>	Test Lab	<input type="text"/>
Suspected SRO	<input type="text"/>		Sample Taken	Y/N	<input type="text"/>	Date	<input type="text"/>

Comments

Email completed form: [accounts@potatoesnz.co.nz](mailto:accounts@potatoesnz.co.nz) And/or courier: PO Box 10232, The Terrace, Wellington 6143

**New Zealand Seed Potato Certification Authority  
Graded Seed Tuber Inspection Report**



<b>Seed Lot Number:</b>							
<b>Date:</b>	<b>Trading Name:</b>					<b>Packhouse:</b>	
Variety							
Generation							
Size							
Crop Reference No.							
ROP No.							
No of Bins/Bags							
No of Tags							
No of Tubers Inspected							<b>Average</b>
<b>Type 1 - Defects</b>							
Insect Damage (Max 4%)							
Damaged Not infected (Max 4%)							
Stem End Rot (Max 2%)							
<b>Total Type 1 - Defects (Max 5%)</b>							
<b>Type 2 - Diseases</b>							
<b>Bacterial Diseases</b>							
Common Scab (Max 1%) of tubers with 5% of total Surfaced Covered							
Wet Rot (Max 0.1%)							
Other bacterial							
<b>Fungal Diseases</b>							
Fusarium (Max 1%)							
Gangrene (Max 1%)							
Rhizoctonia (Max 5%) of tubers with 5% of total Surfaced Covered							
Powdery Scab (Max 1%)							
Other fungal							
<b>Nematode</b>							
Root Knot Nematode (Max 2%)							
<b>Total Type 2 - Diseases (Max 5%)</b>							
<b>Type 3 - Sizing</b>							
Weight of 100 Tubers (kg)							
No undersize (Max 5%)							
No oversize (Max 5%)							
Mis-shapen Tubers (Max 4%)							
<b>Biosecurity Suspected SRO:</b>							
<b>Action Taken:</b> Call 0800 80 00 <b>Y/N</b>							
Sample Taken <b>Y/N</b>							
Test Lab							
Date							
<b>Comments:</b>							
<b>Inspector Name:</b>							
<b>Result</b>	<b>Pass</b>			<b>Fail</b>			

Email completed form: [accounts@potatoesnz.co.nz](mailto:accounts@potatoesnz.co.nz) And/or courier: Potatoes New Zealand, PO Box 10232, The Terrace, Wellington 6143



## APPLICATION FOR ENTRY OF A NEW VARIETY INTO THE NEW ZEALAND SEED POTATO CERTIFICATION SCHEME

This form is to be used for varieties that are to be grown commercially in the New Zealand Seed Potato Certification Scheme.

Date:

\_\_\_\_\_

Name and address  
of NZ agent:

\_\_\_\_\_  
\_\_\_\_\_  
\_\_\_\_\_  
\_\_\_\_\_

Name and address  
of breeder:

\_\_\_\_\_  
\_\_\_\_\_  
\_\_\_\_\_

Attached to this form must be (or made available to the Certification Authority to view):

1. Proof of Plant Variety Rights grant, agency or licensee where applicable.
2. Certification that none of the following viruses have been detected in the varieties entered: PLRV, PVY, PVX, PVM, PVA, PVS, if required (not required where varieties have come through an accepted tissue culture programme).
3. Breeding history and description of the variety.

Variety Name or Code Number	PVR POT No.	Documents included (incl. Path. Test, etc)

**Email completed form and any supporting documents to:** [accounts@potatoesnz.co.nz](mailto:accounts@potatoesnz.co.nz)  
**And/or courier:** Potatoes New Zealand, PO Box 10232, The Terrace, Wellington 6143

# APPENDIX 1: 2023-2024 MPI PHYTOSANITARY OFFICIAL ASSURANCE PROGRAMME FOR POTATO CYST NEMATODE AND POTATO WART REGISTRATION APPLICATION FORMS

## PART 1 Ministry for Primary Industries (MPI) Phytosanitary Official Assurance Programme Agreement: **Must Be Completed by ALL Applicants**

I apply to register for the MPI Phytosanitary Official Assurance Programme for Potato Cyst Nematode and Potato Wart.

		Tick	Complete:	Send to:
<b>I wish to register for these parts of the Potato OAP:</b>	Registration of Production Site	<input type="checkbox"/>	Parts 1 & 2	Potatoes New Zealand Inc.
	Registration of Packing Facility or Storage Facility	<input type="checkbox"/>	Parts 1 & 3	IVA
	Registration of MPI Approved Organisations	<input type="checkbox"/>	Parts 1 & 4	IVA
	Registration of Exporter	<input type="checkbox"/>	Parts 1 & 5	Potatoes New Zealand Inc.
Applicant:		Contact Person		
Postal Address:		Telephone #		
		Facsimile #		
E-mail Address		Cell Phone #		

1. Are you an MPI Approved Organisation under MPI Plant Export Certification Standard “Organisation Requirements” (i.e. approved to carry out phytosanitary inspection of potatoes?) Yes ☐ No ☐

2. If YES, please state your Contract of Approval Number and IVA: \_\_\_\_\_

3. If NO, please state which IVA will be employed by you to provide export phytosanitary services:  
 AsureQuality Ltd ☐ or SGS New Zealand Ltd ☐

4. Growers, packhouse and storage facility operators, MPI Approved Organisations, please send **ALL** forms to your elected IVA.

5. Exporters send forms to Potatoes New Zealand Inc.

### IN RETURN FOR MPI ACCEPTING MY APPLICATION FOR REGISTRATION FOR THIS POTATO OAP:

- I agree to comply with the requirements specified within the Plant Export Requirement document MPI Phytosanitary Official Assurance Programme for Potato Cyst Nematode and Potato Wart (Potato OAP).
- I agree to the IVA, on behalf of MPI, making enquiries and using the information supplied by me, in connection with the Potato OAP, and to audit my compliance with the Potato OAP.
- I consent to publication of my status within the Potato OAP (including details of any PCN detections on my registered production sites) in any publication.
- I agree to afford the IVA, or their representatives, co-operation and access necessary to carry out audits in relation to the Potato OAP.
- I understand that if I fail to provide all or any of the information requested in connection with the Potato OAP I may be removed from the Potato OAP forthwith.
- I understand that under the Information Privacy Principles of the Privacy Act 1993, I have rights of access to, and correction of, personal information held in connection with participation within this Potato OAP.
- I understand that this registration does not entitle me to automatically undertake export inspection activities on behalf of MPI without first becoming formally approved as per the “MPI Plant Export Certification Standard Organisation Requirements”.
- I agree to notify the IVA of any changes to my registration details.
- I acknowledge that I will need to engage an IVA to provide the services described in the Potato OAP.
- I acknowledge that notification on the MPI website that I have been accepted into the Potato OAP is acceptance of this Agreement by MPI.

### 11. EXCLUSION OF LIABILITY

- I accept that under no circumstances will MPI, crown officers, or agents of or other persons associated with MPI or crown officers, be liable for any loss, claim, action, demand, expense, inquiry, harm, or damage, however caused, arising directly or indirectly from or connected in any way to:
  - My performance, or as the case may be, non-performance (or any of my contractors, sub-contractors, agents, or employees that are not a party to this Agreement) of any of its obligations in respect of this Potato OAP; or

- b. The provision or non-provision of any inspection and/or audit and/or documentation service for MPI export phytosanitary certification.

### 13. INDEMNITY

14. I will indemnify and keep indemnified MPI from and against any liability, loss, damage, costs and expenses (including legal costs and any expenses of going to arbitration), which MPI may suffer or incur arising directly or indirectly from:
  - a. My performance, or as the case may be, non-performance (or any of my contractors, sub-contractors, agents, or employees that are not a party to this Agreement) of any of its obligations in respect of this Potato OAP;
  - b. Negligent acts or omissions on my part (or any of my contractors, sub-contractors, agents, or employees that are not a party to this Agreement).

### APPLICANT TO COMPLETE

Applicant Signature	
Applicant Name	
On behalf of (company/business)	Date
IVA TO COMPLETE  Signature of (state IVA) representative	Date
Name	
Title	
Seal	

2023-2024 EXPORT OAP POTATO REGISTRATION FORMS

PART 2: Property Production Site Registration

ADMINISTRATIVE USE ONLY	Production site 1	Production site 2	Production site 3	Production site 4
MPI Unique Identifier				
Comments				

1. Please use additional pages for extra production site registrations.
2. Remember to attach a map showing all production sites.

CROP INFORMATION	Production site 1	Production site 2	Production site 3	Production site 4
Growers Name (if not applicant)				
Physical Location				
Property Valuation No.				
Farm ROP <sup>1</sup> No. (if known)				
Paddock / Block ID				
Estimated date of planting				
Production Site Area to be Planted				
Paddock area – Ha				
Is the land leased? (Y/N)				
Type of survey required	<div><input type="checkbox"/> Korea</div> <div><input type="checkbox"/> Taiwan</div> <div><input type="checkbox"/> Vietnam</div> <div><input type="checkbox"/>Pre-plant soil</div> <div><input type="checkbox"/> Fork sampling</div> <div><input type="checkbox"/> Pre-harvest soil</div> <div><input type="checkbox"/> Post harvest soil</div> <div><input type="checkbox"/>10 year exemption</div>	<div><input type="checkbox"/> Korea</div> <div><input type="checkbox"/> Taiwan</div> <div><input type="checkbox"/> Vietnam</div> <div><input type="checkbox"/> Pre-plant soil</div> <div><input type="checkbox"/> Fork sampling</div> <div><input type="checkbox"/> Pre-harvest soil</div> <div><input type="checkbox"/> Post harvest soil</div> <div><input type="checkbox"/>10 year exemption</div>	<div><input type="checkbox"/> Korea</div> <div><input type="checkbox"/> Taiwan</div> <div><input type="checkbox"/> Vietnam</div> <div><input type="checkbox"/> Pre-plant soil</div> <div><input type="checkbox"/> Fork sampling</div> <div><input type="checkbox"/> Pre-harvest soil</div> <div><input type="checkbox"/> Post harvest soil</div> <div><input type="checkbox"/>10 year exemption</div>	<div><input type="checkbox"/> Korea</div> <div><input type="checkbox"/> Taiwan</div> <div><input type="checkbox"/> Vietnam</div> <div><input type="checkbox"/> Pre-plant soil</div> <div><input type="checkbox"/> Fork sampling</div> <div><input type="checkbox"/> Pre-harvest soil</div> <div><input type="checkbox"/> Post harvest soil</div> <div><input type="checkbox"/>10 year exemption</div>
Category of seed planted for Korea				
Category of seed planted for Taiwan				
Category of seed planted for Vietnam				

**NOTE: POTATOES FOR EXPORT TO KOREA, TAIWAN and VIETNAM**

1. You **MUST** apply to register **BEFORE** planting for Korea and Taiwan. This is also required for Vietnam if using a pre-plant soil test.
2. A pre-planting soil test for PCN **MUST** be conducted for Korea and Taiwan.
3. You **MUST** plant only certified seed potatoes for this market.
4. Contact your IVA for further details.

1) **Region of Production**

## 2023-2024 EXPORT OAP POTATO REGISTRATION FORMS

### PART 3: Registration of Packing or Storage Facility

Please complete additional details where different to Applicant Details supplied in PART 1:

Description of Facility (tick):	Packing <input type="checkbox"/> Storage <input type="checkbox"/>	Contact Person:	
Person(s) nominated as responsible for potato wart requirements		Name(s):	
Facility Company Name:		Phone:	
		Fax:	
Physical Location of Facility:		Register for Taiwan? (tick) <input type="checkbox"/> Register for Korea? (tick) <input type="checkbox"/> Register for Vietnam? (tick) <input type="checkbox"/>	

Description of Facility (tick):	Packing <input type="checkbox"/> Storage <input type="checkbox"/>	Contact Person:	
Person(s) nominated as responsible for potato wart requirements		Name(s):	
Facility Company Name:		Phone:	
		Fax:	
Physical Location of Facility:		Register for Taiwan? (tick) <input type="checkbox"/> Register for Korea? (tick) <input type="checkbox"/> Register for Vietnam? (tick) <input type="checkbox"/>	

**Please supply details of the exporters who will be exporting the potatoes packed by you under this Potato OAP:**

Note: Notify any changes to Potatoes New Zealand Inc. and to your nominated IVA.

Exporter:	
Contact Person:	
Postal Address:	

Exporter:	
Contact Person:	
Postal Address:	

Exporter:	
Contact Person:	
Postal Address:	

Signature of Applicant: \_\_\_\_\_

Date: \_\_\_\_\_

2023-2024 EXPORT OAP POTATO REGISTRATION FORMS

PART 4:        Registration of MPI Approved Organisation (to carry out phytosanitary inspection of potatoes)

**Note:** All MPI Approved Organisations undertaking phytosanitary inspection of potatoes under the Potato OAP must apply annually for registration with MPI via their nominated IVA. Applications will be accepted at any time, but note that registrations expire on 31 October each year.

**Note:** MPI Approved Organisations that are not registered are not eligible for participation in this Potato OAP.

1. Are you an MPI Approved Organisation under MPI Standard “Organisation Requirements” (i.e. approved to carry out phytosanitary inspection of potatoes?)	Yes	<input type="checkbox"/>	No	<input type="checkbox"/>
2. Please state your Contract of Approval Number: _____				
3. Please state your Organisation’s nominated IVA: _____				

Applicant:		Contact Person	
Postal Address:		Telephone #	
		Facsimile #	
E-mail Address		Cell Phone #	

Please complete this registration form and send to your nominated IVA.



## 2023-2024 EXPORT OAP POTATO REGISTRATION FORMS

### PART 5: Registration of EXPORTER in the MPI Phytosanitary Official Assurance Programme for Potato Cyst Nematode and Potato Wart

Exporters are invoiced \$5 plus GST per tonne of potatoes exported under this Potato OAP. A deposit of **\$6,000** plus GST is required to accompany this application for registration as an exporter under this Potato OAP. This fee includes a non-refundable administration fee of \$1,000, and the balance of \$5,000 is credited to the exporter's account. If any exporter exports less than 1000 tonnes of potatoes, the balance of the \$5,000 credit is refundable on request after the end of the season (31 October). Registrations are accepted at any time, but **all exporter registrations expire on 31 October each year.**

Please note: as part of the Commodity Levies Order for potatoes all exporters must pay a levy on all sales.

Exporters are required to nominate any **sub-agents** exporting under their registration. For each sub-agent nominated by an exporter, a non-refundable administration fee of **\$1,000** plus GST is required to accompany this application. Payment should be made to Potatoes New Zealand Inc. by direct credit to PNZ Inc. bank account 02-1269-0016181-00.

**Please note cheques will not be accepted due to banks no longer accepting them.**

Please forward your application for registration to: **Potatoes New Zealand Inc.**

**P O Box 10232**

**Wellington 6143**

**Email: [accounts@potatoesnz.co.nz](mailto:accounts@potatoesnz.co.nz)**

#### Complete details where they differ from those provided in PART A:

Exporter Company Name:		Contact Person:	
Postal Address:		Phone:	
		Fax:	
Physical Location of Exporter's Registered (GST) Office:		Cell Phone:	
		Email:	

#### Exporter sub-agent that will export under this registration

**Note: for Taiwan, Korea and/or Vietnam all exporters must be fully registered - agents may not participate.**

	Sub-Agent details	Sub-Agent details
Sub-Agent Exporter Company Name:		
Postal Address:		
Contact Person		
Phone		
Fax:		
Cell Phone		
Email:		
Physical Location of Exporter's Registered (GST) Office:		

**Exporter Declaration**

1. I agree to notify Potatoes New Zealand Inc. of any changes to the above details.
2. I agree to pay to Potatoes New Zealand Inc. a fee of \$5 plus GST per tonne of potatoes exported under this Potato OAP, including potatoes exported by other nominated exporters, agents or associates as identified in this form, or subsequently nominated in writing to Potatoes New Zealand Inc.
3. I enclose a cheque or have direct credited payment to Potatoes New Zealand Inc. for \$6,000 plus GST being my registration fee deposit of \$5,000 plus a non-refundable administration fee of \$1,000 to participate as an exporter in the Potato OAP.
4. I enclose a cheque or have direct credited payment to Potatoes New Zealand Inc. for \$1,000 for each sub agent I have nominated as exporting potatoes under my registration. I understand this fee is non-refundable.
5. I understand that I will be invoiced \$5 plus GST per tonne of potatoes exported under this Potato OAP.
6. I understand that my registration expires on 31 October annually.

**Signature of Applicant:** \_\_\_\_\_**Date:** \_\_\_\_\_**Potatoes New Zealand Inc. Use Only**

Receipt No: \_\_\_\_\_

Application for registration forwarded to MPI \_\_\_\_\_/\_\_\_\_\_/\_\_\_\_\_

Application for registration checked on website \_\_\_\_\_/\_\_\_\_\_/\_\_\_\_\_ Name &amp; Signature: \_\_\_\_\_

**MPI use only**Applicant notified: *Letter/Fax/Email* \_\_\_\_\_*Exporter details loaded on MPI website*

Database updated: \_\_\_\_\_/\_\_\_\_\_/\_\_\_\_\_

Name &amp; Signature: \_\_\_\_\_

Date Received: \_\_\_\_\_ Job no.: \_\_\_\_\_

## Sample Submission Form

### Potato Virus Testing

Please use one submission form per sample

#### Contact details

Address for results		Copy to	
Business: _____		Business: _____	
Contact: _____		Contact: _____	
Address: _____		Address: _____	
Town: _____ Postcode: _____		Town: _____ Postcode: _____	
Phone: _____ Fax: _____		Phone: _____ Fax: _____	
Mobile: _____		Mobile: _____	
Email: _____		Email: _____	
Address for invoice		Grower	
Business: _____		Business: _____	
Contact: _____		Contact: _____	
Address: _____			
Town: _____ Postcode: _____		Name: _____	
Account no.: _____ Order no.: _____		Signature: _____	
		Date: _____	

#### Sample identification

Sample type: _____ (leaves, tubers, root, soil)	Cultivar: _____
Official reference no./Sample ID: _____	Generation: _____
Export certification? <input type="checkbox"/> no <input type="checkbox"/> Yes/no	Country of export: _____
No. of subsamples/bags submitted: _____	No. per bag: _____

#### Tests required (please tick)

<input type="checkbox"/> PLRV <input type="checkbox"/> PVA <input type="checkbox"/> PVM <input type="checkbox"/> PVS <input type="checkbox"/> PVX <input type="checkbox"/> PVY <input type="checkbox"/> PMTV <input type="checkbox"/> Other: _____
----------------------------------------------------------------------------------------------------------------------------------------------------------------------------------------------------------------------------------------------------

#### Sampling

Submit up to 10 leaves or 25 roots per clean/new plastic bag, making sure not to cross contaminate sub samples.

1. Samples should be kept cool at all times. Courier in chilly bin with ice pack. Separate samples from ice pack to avoid frost damage to samples.
2. If necessary, tubers will be sprouted until suitable leaves have developed for tests. This may take several months.
3. For sample sizes for export, consult the Importing Country Phytosanitary Requirements (ICPRs)
4. Meristem plantlets are grown-on in a green house and each plantlet will be tested individually.
5. Courier samples with this completed form to: **AsureQuality - Plant Health Lab** (att. Rouke Bakker)

**South Drive**  
**Lincoln University**  
**Lincoln 7674**



**Potatoes New Zealand Inc**

Level 4, Co-operative Bank House,  
20 Ballance Street, Wellington  
PO Box 10232, The Terrace,  
**Wellington 6143**

Phone: 0800 399 674

**[www.potatoesnz.co.nz](http://www.potatoesnz.co.nz)**