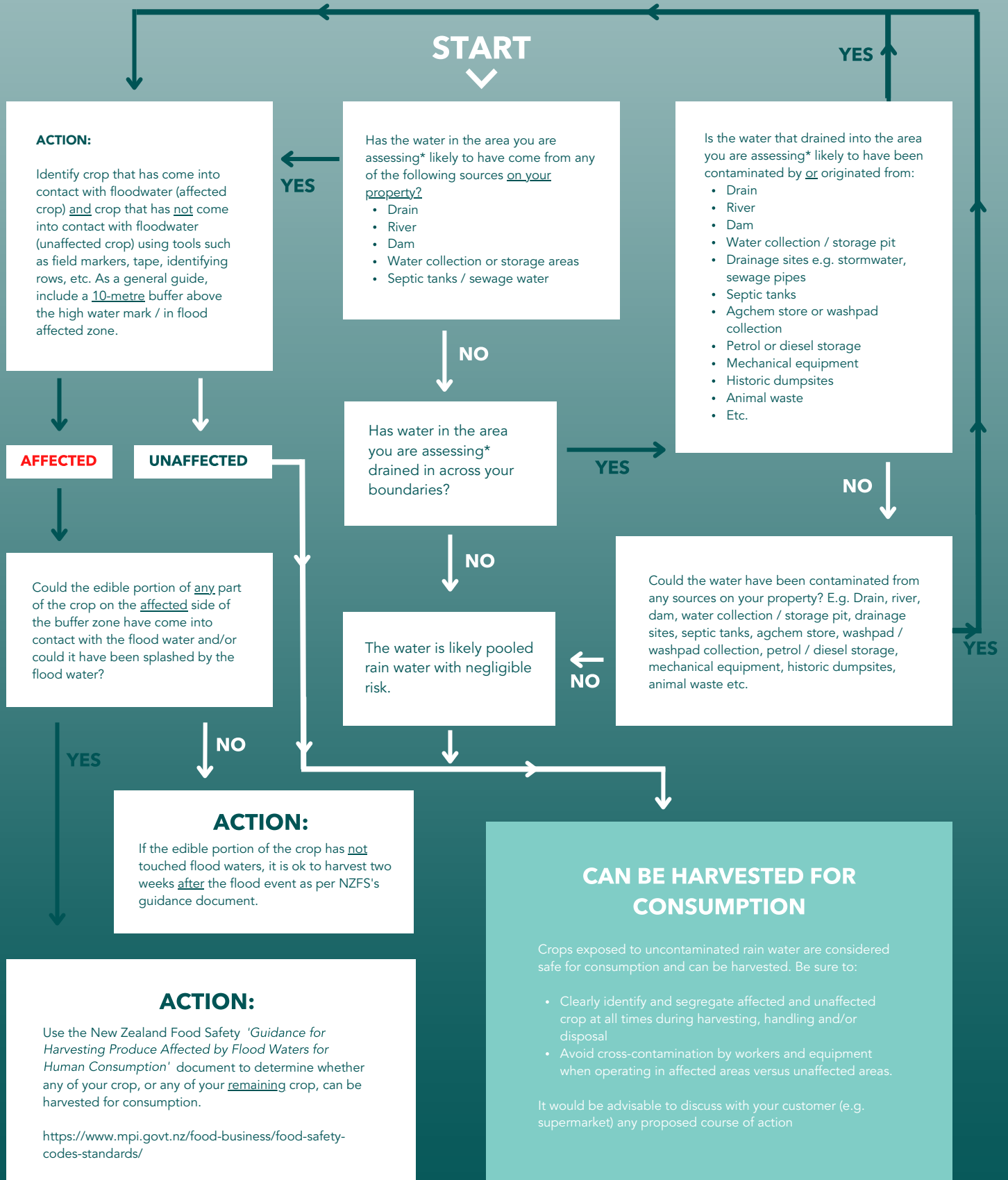




GROWER DECISION TREE FOR FLOOD-AFFECTED PRODUCE



This document is not intended to replace any official advice. Growers are required to act in accordance with New Zealand Food Safety regulations. Contact NZFS for any further questions you have regarding flood-affected produce: info@mpi.govt.nz | 0800 00 83 33

*The area you are assessing may include the entire property, an individual block or group of blocks, a crop etc.

Version 1 - 15 February 2023